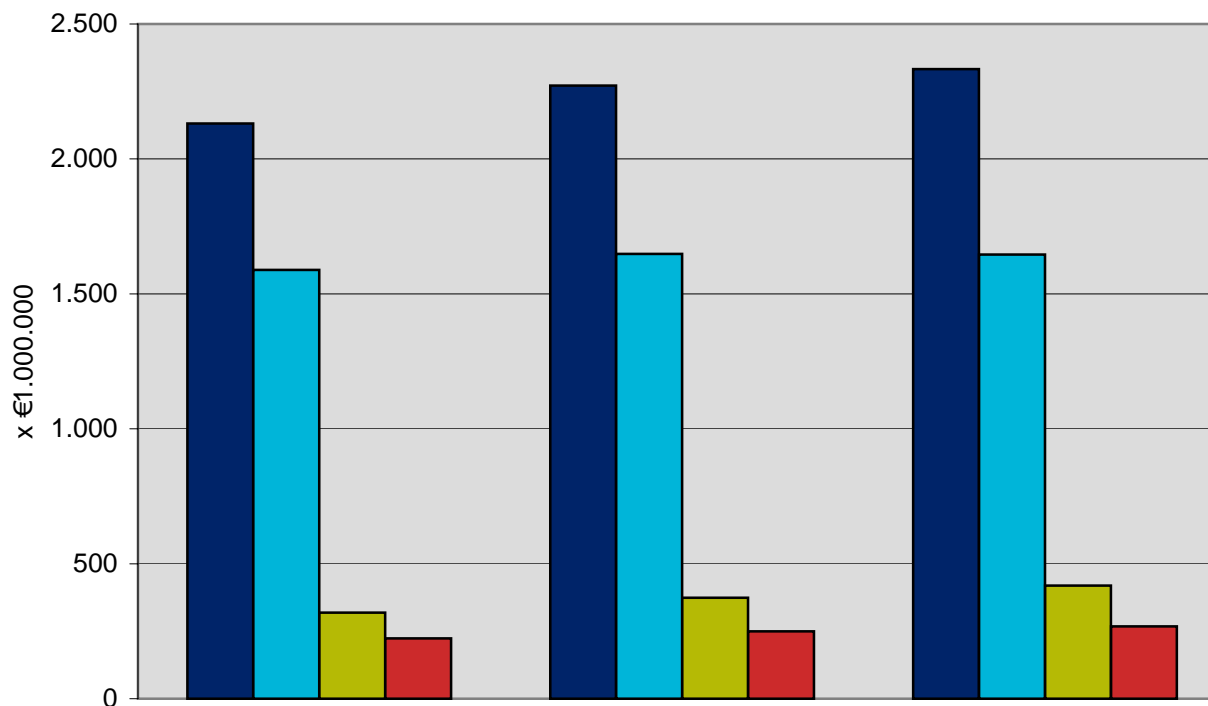




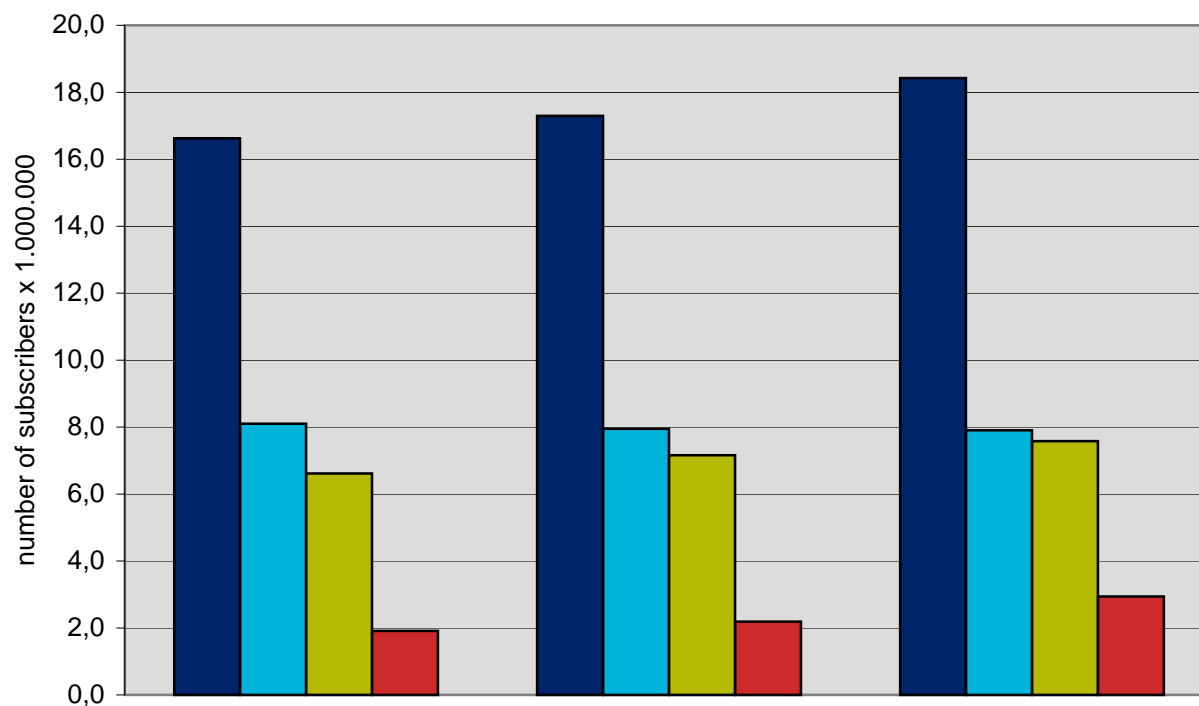
Mobile: Retail revenues



	30-06-2006	31-12-2006	30-06-2007	Change 07Q2/06Q2
■ Total revenues	2.131.058.000	2.271.691.000	2.332.854.000	9,5%
■ Voice revenues	1.588.670.000	1.647.907.000	1.645.774.000	3,6%
■ Non-voice revenues	318.665.000	374.009.000	419.325.000	31,6%
■ Service providers + MVNO's revenues	223.724.000	249.775.000	267.756.000	19,7%



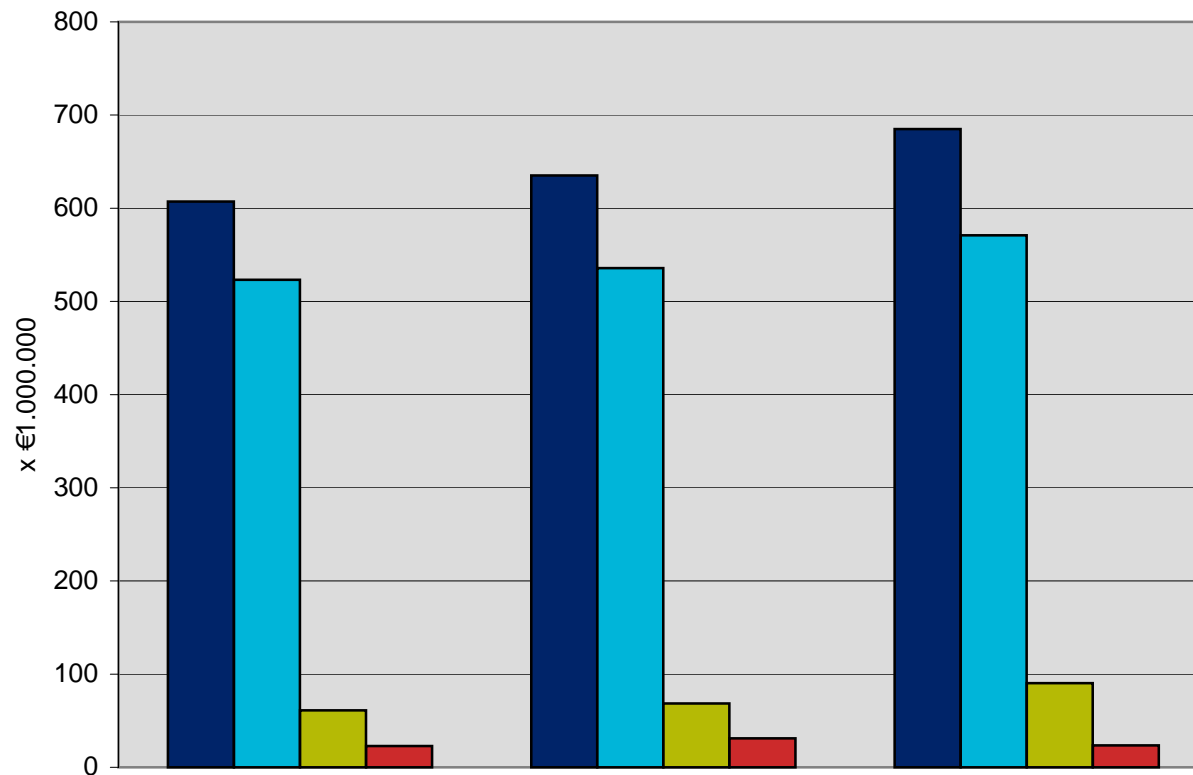
Mobile: Number of subscribers



	30-06-2006	31-12-2006	30-06-2007	Change 07Q2/06Q2
■ Total number of subscribers	16.628.000	17.296.000	18.425.000	10,8%
■ Prepaid	8.101.000	7.946.000	7.904.000	-2,4%
■ Postpaid	6.614.000	7.159.000	7.580.000	14,6%
■ Service providers + MVNO's (Prepaid and Postpaid)	1.913.000	2.190.000	2.941.000	53,7%



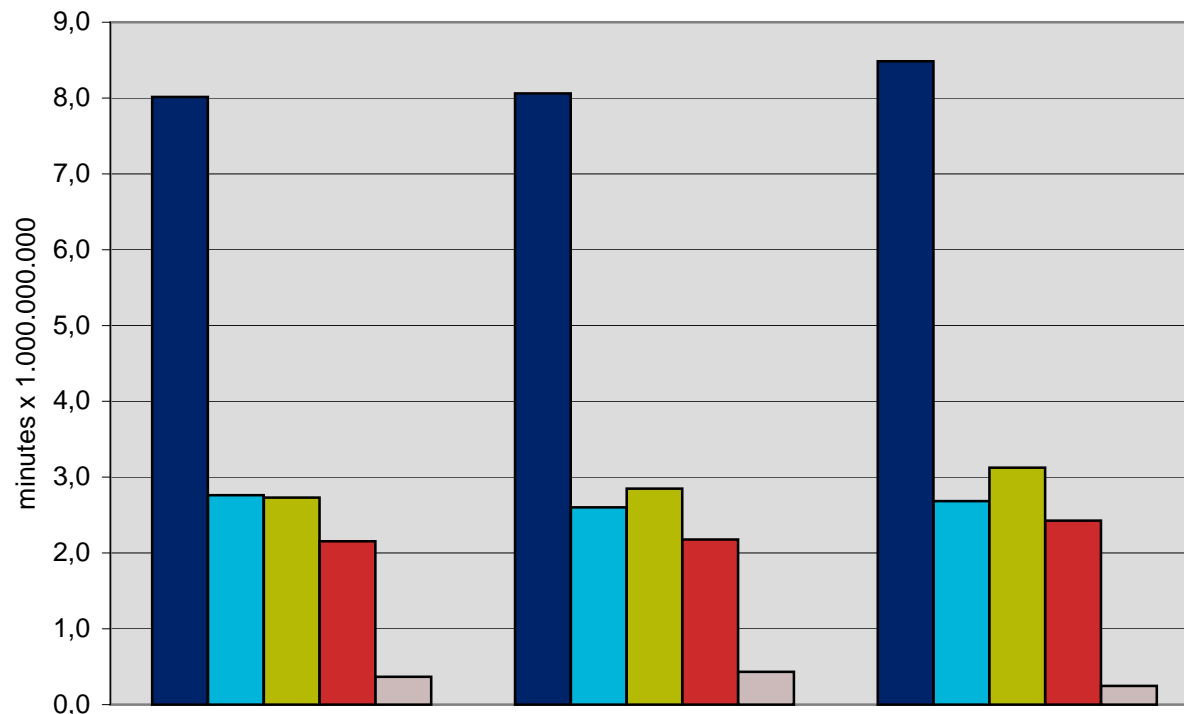
Mobile: Wholesale revenues



	30-06-2006	31-12-2006	30-06-2007	Change 07Q2/06Q2
■ Total wholesale revenues	607.099.000	635.218.000	684.868.000	12,8%
■ Revenues for national voice services	523.138.000	535.672.000	570.959.000	9,1%
■ Revenues for national non-voice services	61.143.000	68.451.000	90.352.000	47,8%
■ Revenues for international services	22.818.000	31.095.000	23.557.000	3,2%



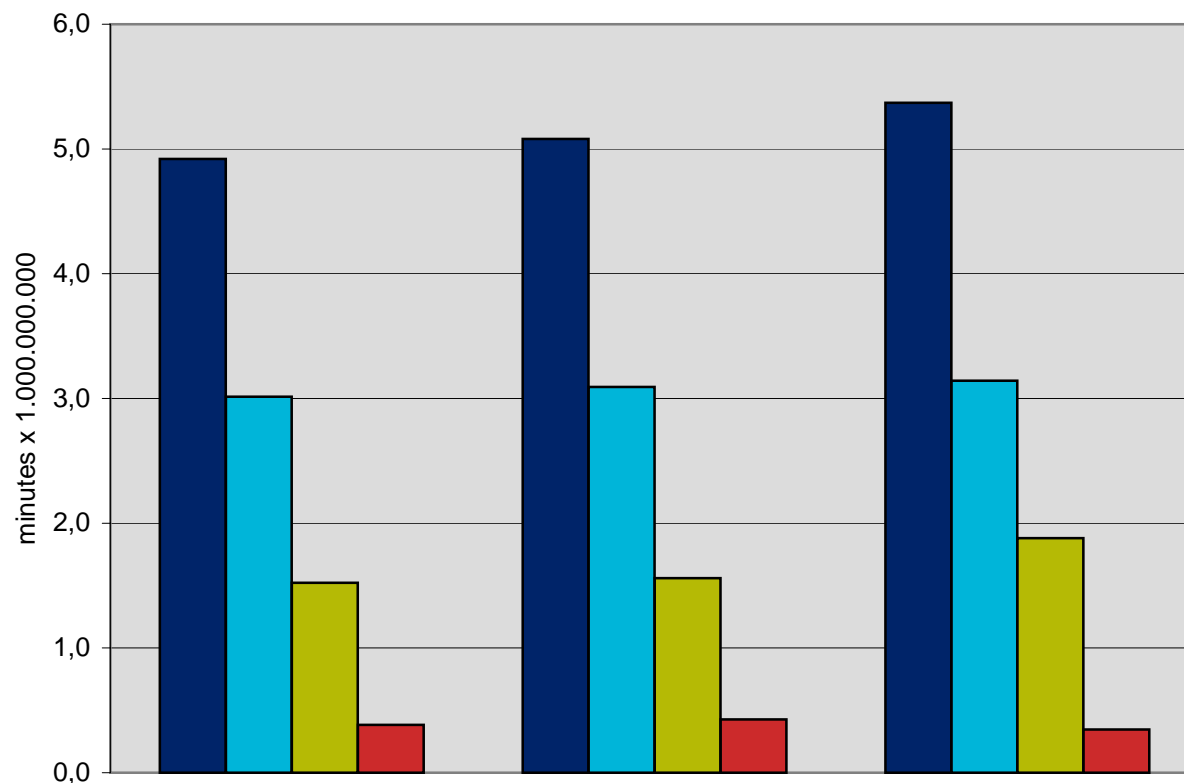
Mobile: Traffic in minutes



	30-06-2006	31-12-2006	30-06-2007	Change 07Q2/06Q2
■ Total volume	8.014.955.000	8.060.536.000	8.484.358.000	5,9%
■ Volume on-net, within own mobile network	2.762.841.000	2.601.453.000	2.684.262.000	-2,8%
■ Volume off-net, to other national mobile networks	2.730.220.000	2.849.719.000	3.125.752.000	14,5%
■ Volumes to fixed national networks	2.155.133.000	2.176.977.000	2.427.417.000	12,6%
■ Volumes to foreign networks	366.761.000	432.386.000	246.927.000	-32,7%



Mobile: Wholesale termination volume in minutes



	30-06-2006	31-12-2006	30-06-2007	Change 07Q2/06Q2
■ Total volume of traffic terminated	4.919.641.000	5.080.046.000	5.370.012.000	9,2%
■ Volume terminated from national mobile networks	3.014.087.000	3.092.265.000	3.142.773.000	4,3%
■ Volume terminated from national fixed networks	1.521.831.000	1.560.162.000	1.880.341.000	23,6%
■ Volume terminated from abroad	383.723.000	427.620.000	346.898.000	-9,6%