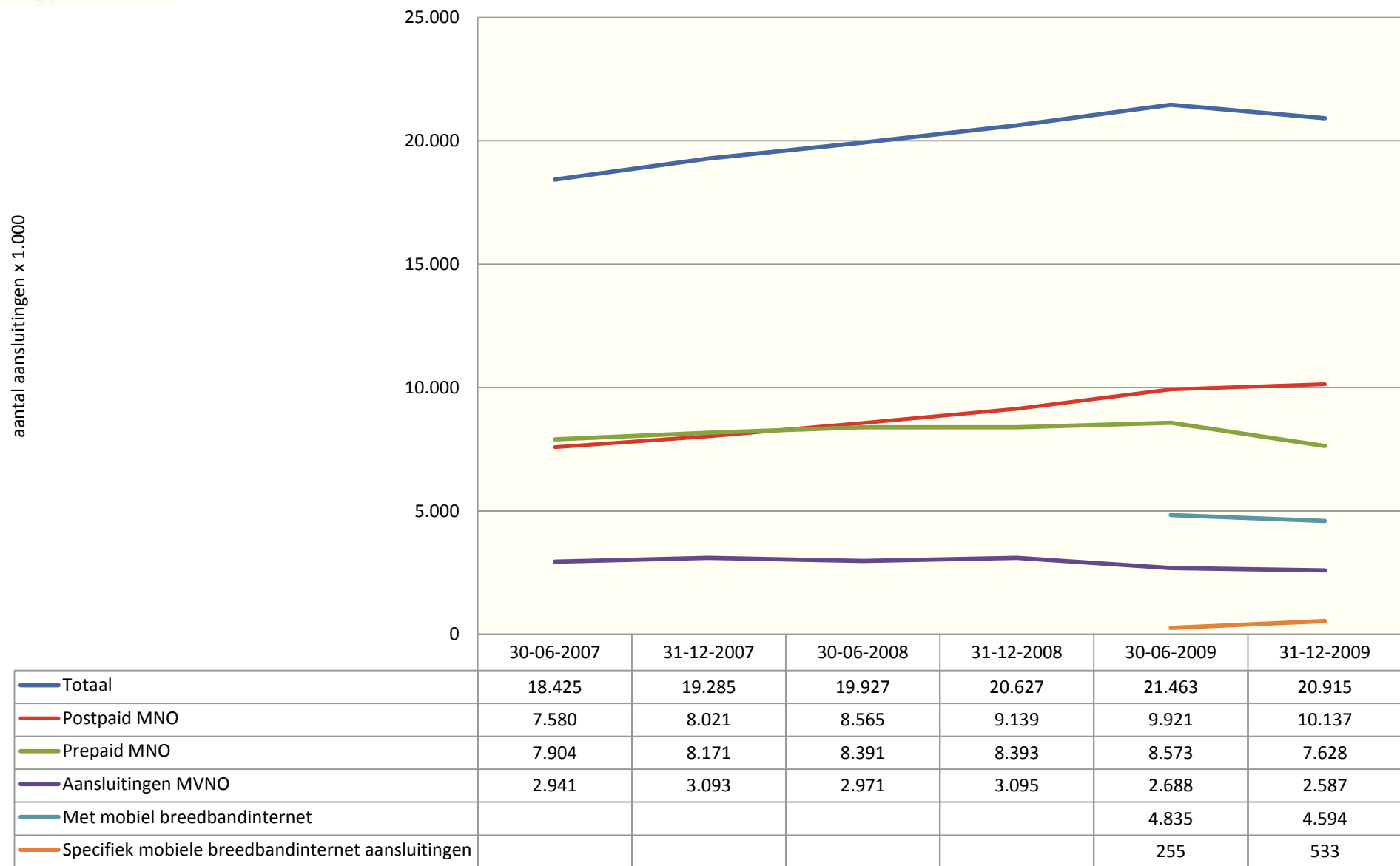


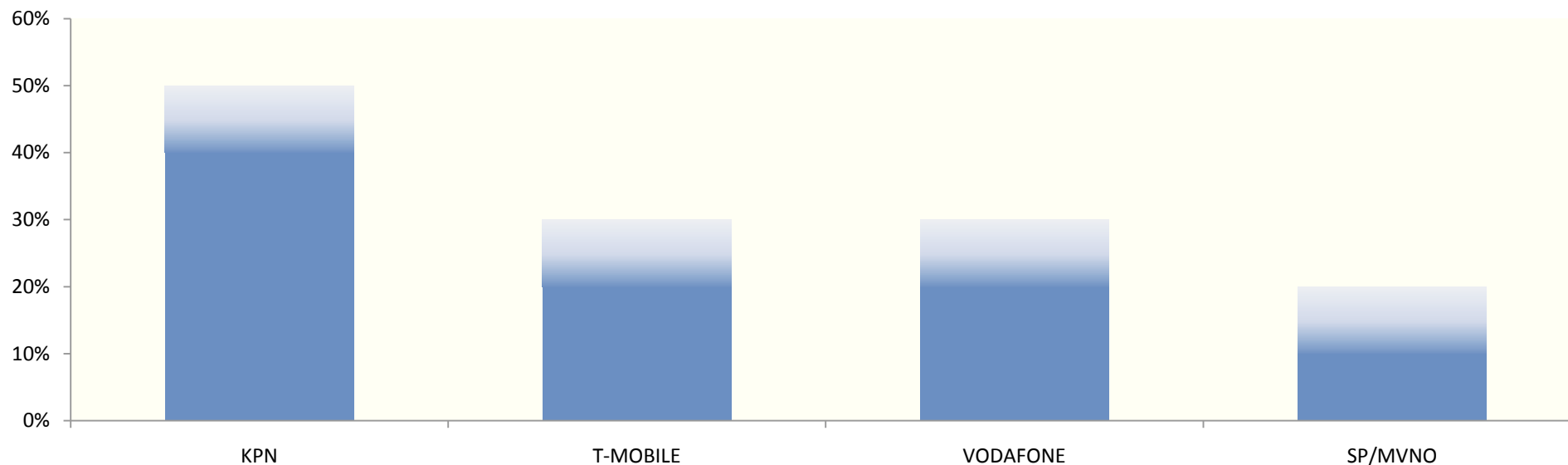


Mobiel: Aantal retailsluitingen





Mobiel: Marktaandelen retail aansluitingen (2009Q4)

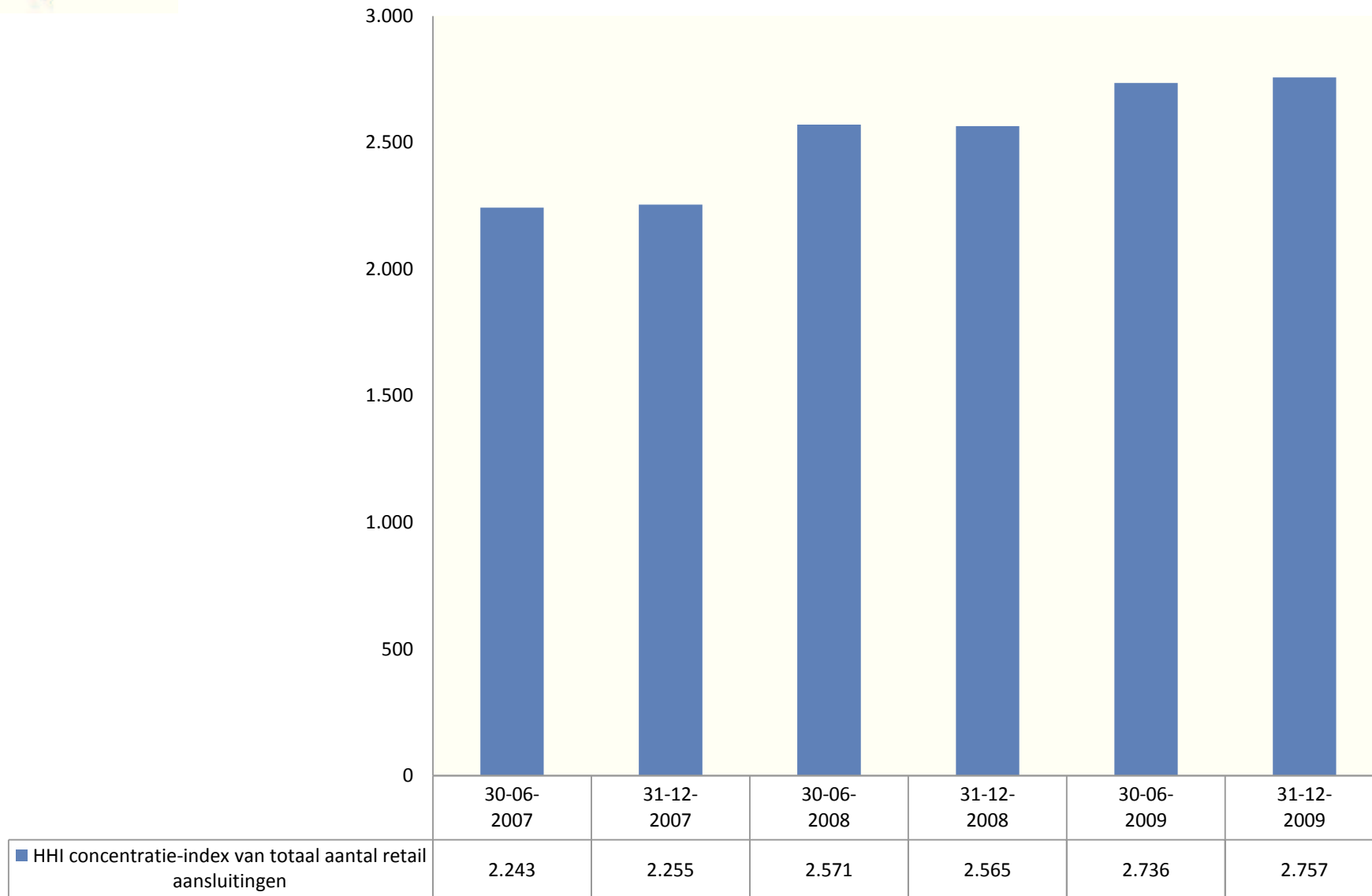


	30-06-2007	31-12-2007	30-06-2008	31-12-2008	30-06-2009	31-12-2009
KPN	[30-40%]	[30-40%]	[30-40%]	[30-40%]	[40-50%]	[40-50%]
ORANGE	[10-20%]	[10-20%]	-	-	-	-
T-MOBILE	[10-20%]	[10-20%]	[20-30%]	[20-30%]	[20-30%]	[20-30%]
TELE2	[0-5%]	[0-5%]	[0-5%]	[0-5%]	-	-
VODAFONE	[10-20%]	[10-20%]	[20-30%]	[20-30%]	[20-30%]	[20-30%]
SP's / Overige MVNO's	[10-20%]	[10-20%]	[10-20%]	[10-20%]	[10-20%]	[10-20%]

Op basis van gegevens van KPN, ORANGE, TELE2, T-MOBILE en VODAFONE. Op basis van vragen 1_A_2_1-2 en 1_B_5_2 van de SMM. ORANGE tot en met 2007. TELE2 tot en met 2008.



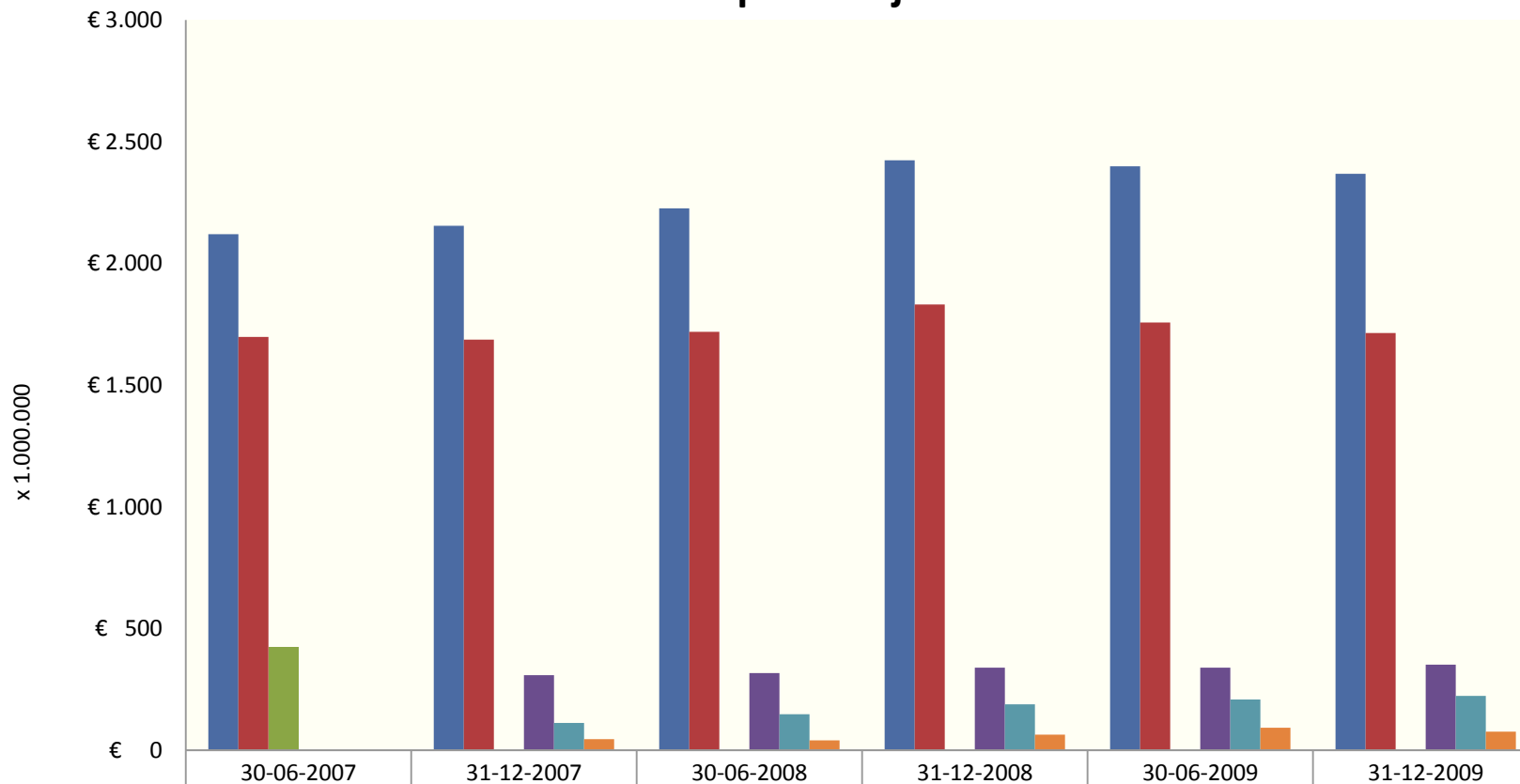
Mobiel: Herfindahl-Hirschman Index retail aansluitingen



Op basis van gegevens van KPN, ORANGE, TELE2, T-MOBILE en VODAFONE. Op basis van vragen 1_A_2_1-2 en 1_B_5_2 van de SMM. ORANGE tot en met 2007. TELE2 tot en met 2008.



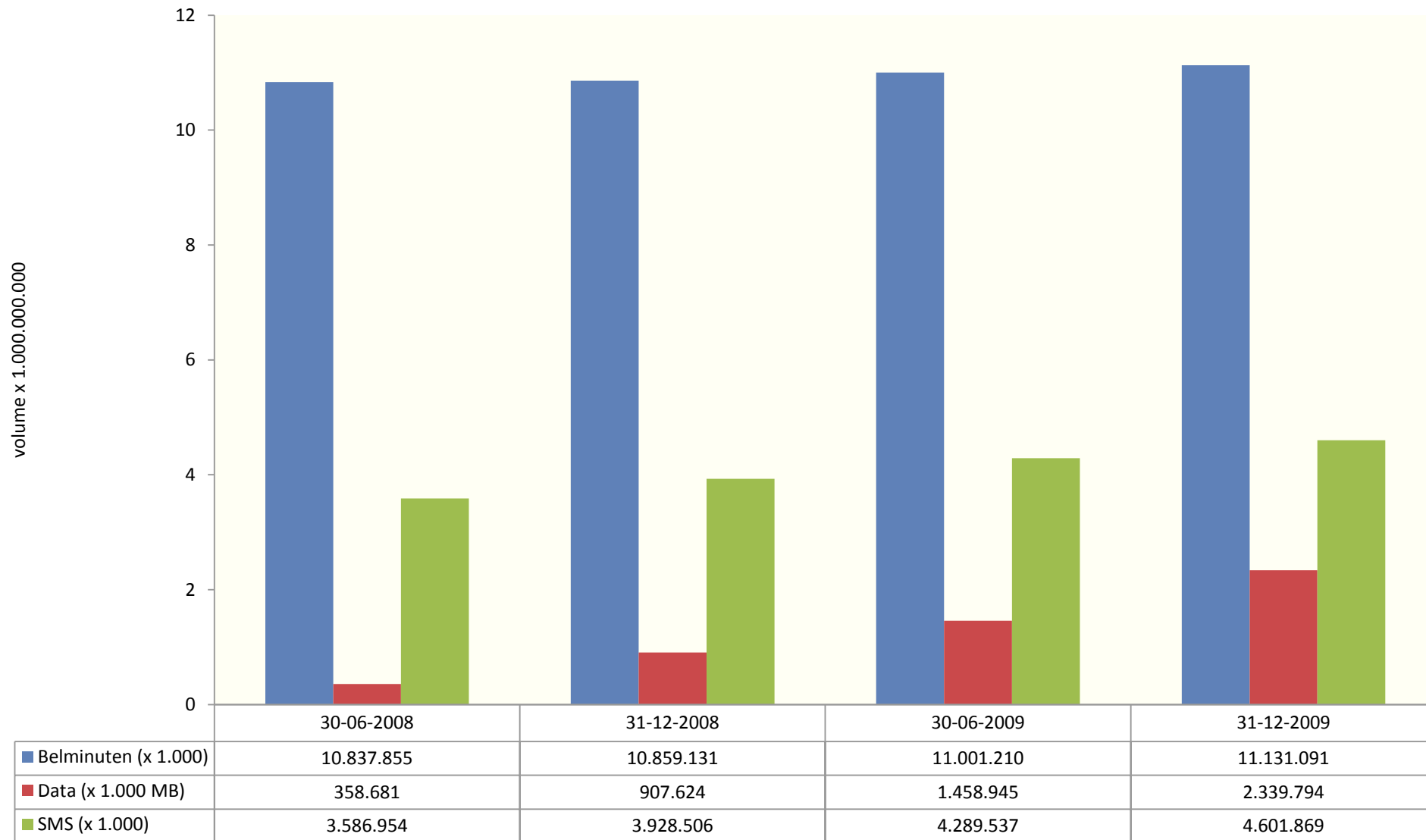
Mobiel: Omzet retail per half jaar



	30-06-2007	31-12-2007	30-06-2008	31-12-2008	30-06-2009	31-12-2009
■ Totaal	€ 2.121	€ 2.154	€ 2.227	€ 2.424	€ 2.399	€ 2.368
■ Omzet spraakdiensten	€ 1.698	€ 1.687	€ 1.719	€ 1.831	€ 1.758	€ 1.715
■ Omzet niet-spraakdiensten	€ 422					
■ Omzet SMS-diensten		€ 309	€ 318	€ 340	€ 340	€ 352
■ Omzet datadiensten		€ 112	€ 149	€ 189	€ 209	€ 224
■ Omzet overige diensten (content)		€ 45	€ 41	€ 64	€ 93	€ 77

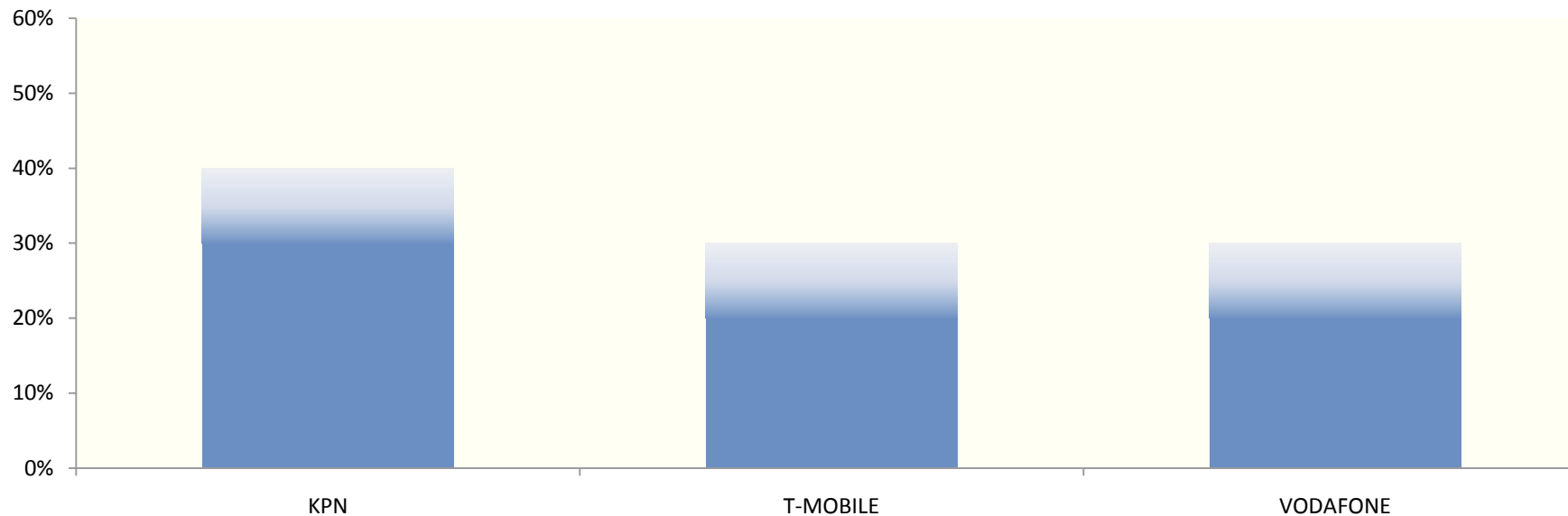


Mobiel: Volume retail belminuten, data en sms per half jaar (MNO's en MVNO's)





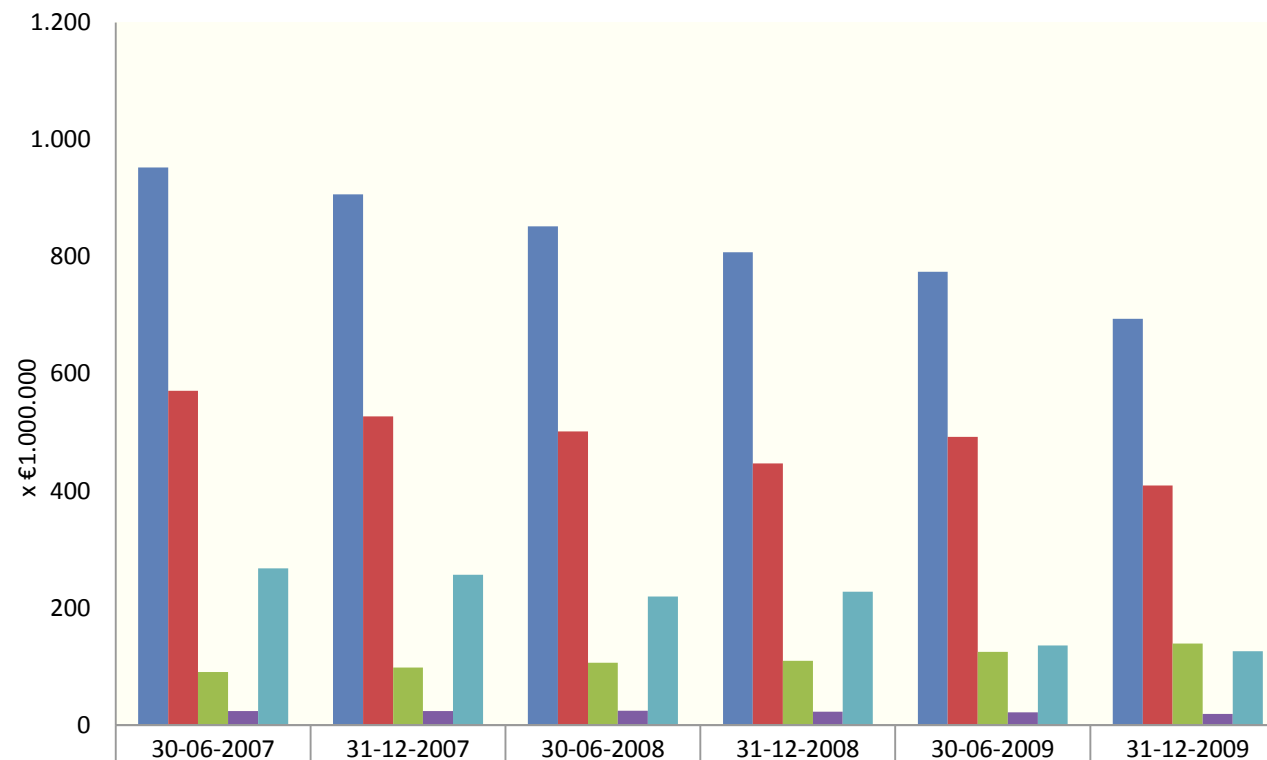
Mobiel: Marktaandelen op basis van totaal volume retail belminuten (2009Q4)



	30-06-2007	31-12-2007	30-06-2008	31-12-2008	30-06-2009	31-12-2009
KPN	[30-40%]	[30-40%]	[30-40%]	[30-40%]	[30-40%]	[30-40%]
ORANGE	[5-10%]	[5-10%]	-	-	-	-
T-MOBILE	[10-20%]	[10-20%]	[20-30%]	[20-30%]	[20-30%]	[20-30%]
TELE2	[0-5%]	[0-5%]	[0-5%]	[0-5%]	-	-
VODAFONE	[20-30%]	[20-30%]	[20-30%]	[20-30%]	[20-30%]	[20-30%]
Overige MVNOs	[10-20%]	[10-20%]	[10-20%]	[10-20%]	[10-20%]	[10-20%]



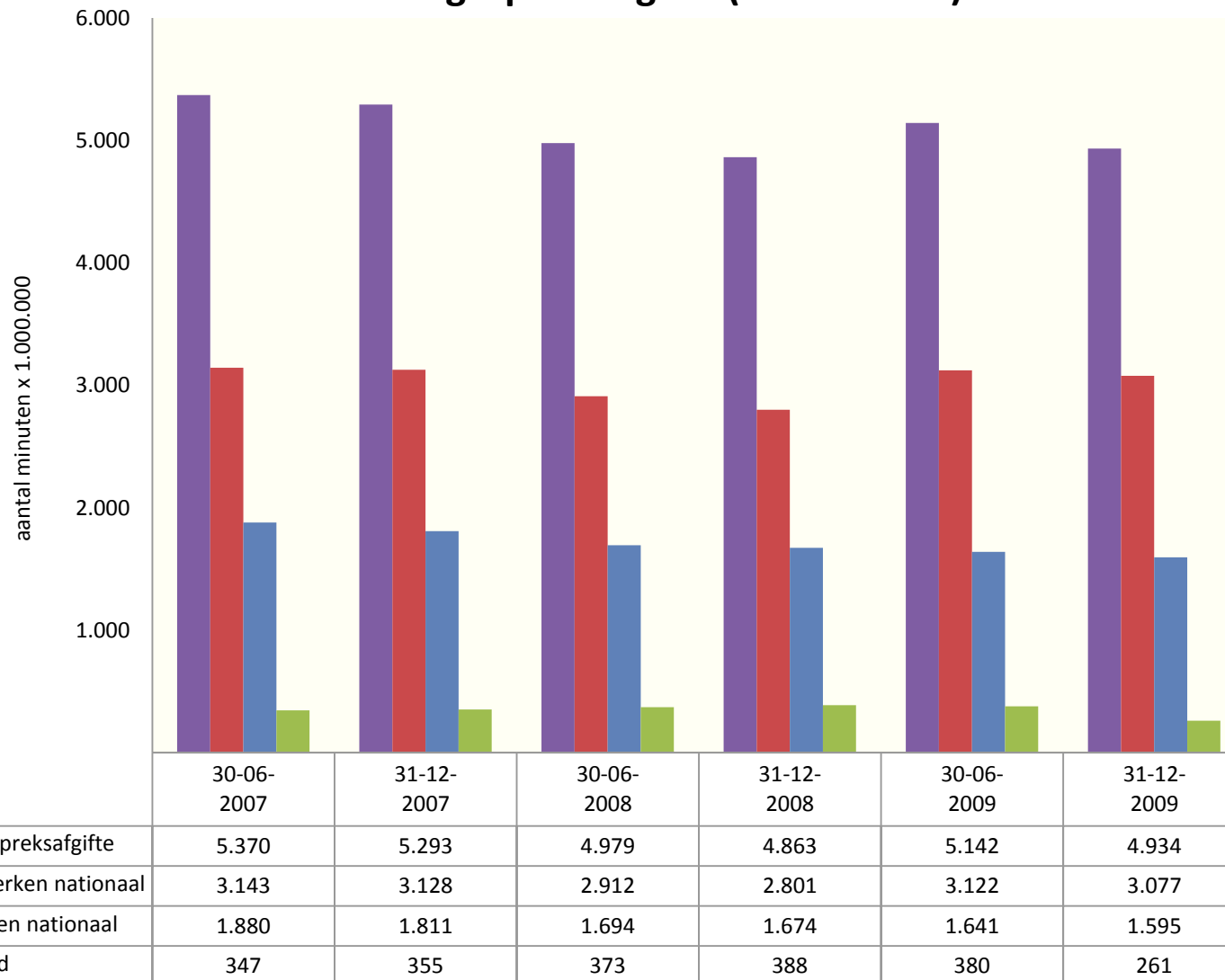
Mobiel: Omzet wholesale gespreksafgifte



Category	30-06-2007	31-12-2007	30-06-2008	31-12-2008	30-06-2009	31-12-2009
■ Totaal omzet wholesale gespreksafgifte	953	906	852	807	774	694
■ Omzet gespreksafgifte spraakdiensten nationaal	571	527	501	447	492	409
■ Omzet gespreksafgifte niet-spraakdiensten nationaal	90	98	106	109	125	139
■ Omzet gespreksafgifte vanuit het buitenland	24	24	24	23	22	19
■ Omzet van diensten geleverd aan service providers en MVNO's	268	257	220	228	136	126

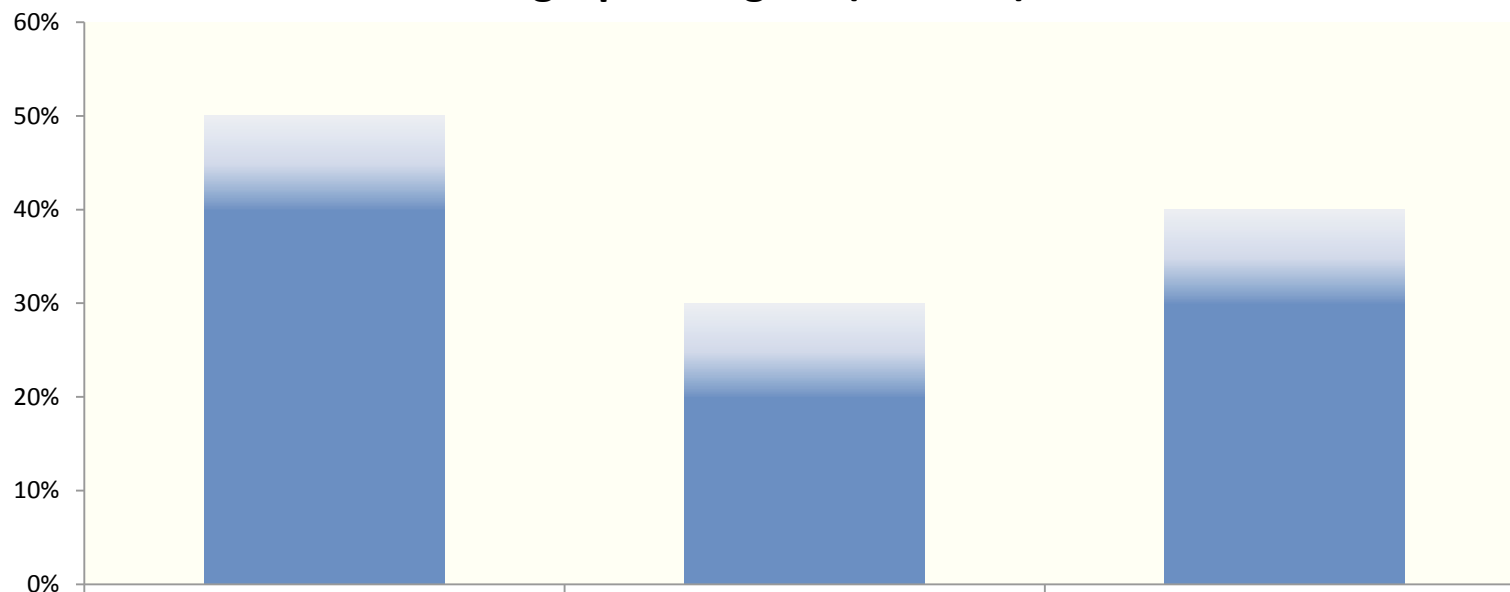


Mobiel: Volume wholesale gespreksafgifte (excl. on-net)





Mobiel: Marktaandelen op basis van totaal volume wholesale gespreksafgifte (2009Q4)



	KPN		T-MOBILE		VODAFONE	
	30-06-2007	31-12-2007	30-06-2008	31-12-2008	30-06-2009	31-12-2009
KPN	[40-50%]	[40-50%]	[40-50%]	[40-50%]	[40-50%]	[40-50%]
ORANGE	[5-10%]	[5-10%]	-	-	-	-
T-MOBILE	[10-20%]	[10-20%]	[20-30%]	[20-30%]	[20-30%]	[20-30%]
TELE2	[0-5%]	[0-5%]	[0-5%]	[0-5%]	-	-
VODAFONE	[20-30%]	[20-30%]	[30-40%]	[30-40%]	[30-40%]	[30-40%]