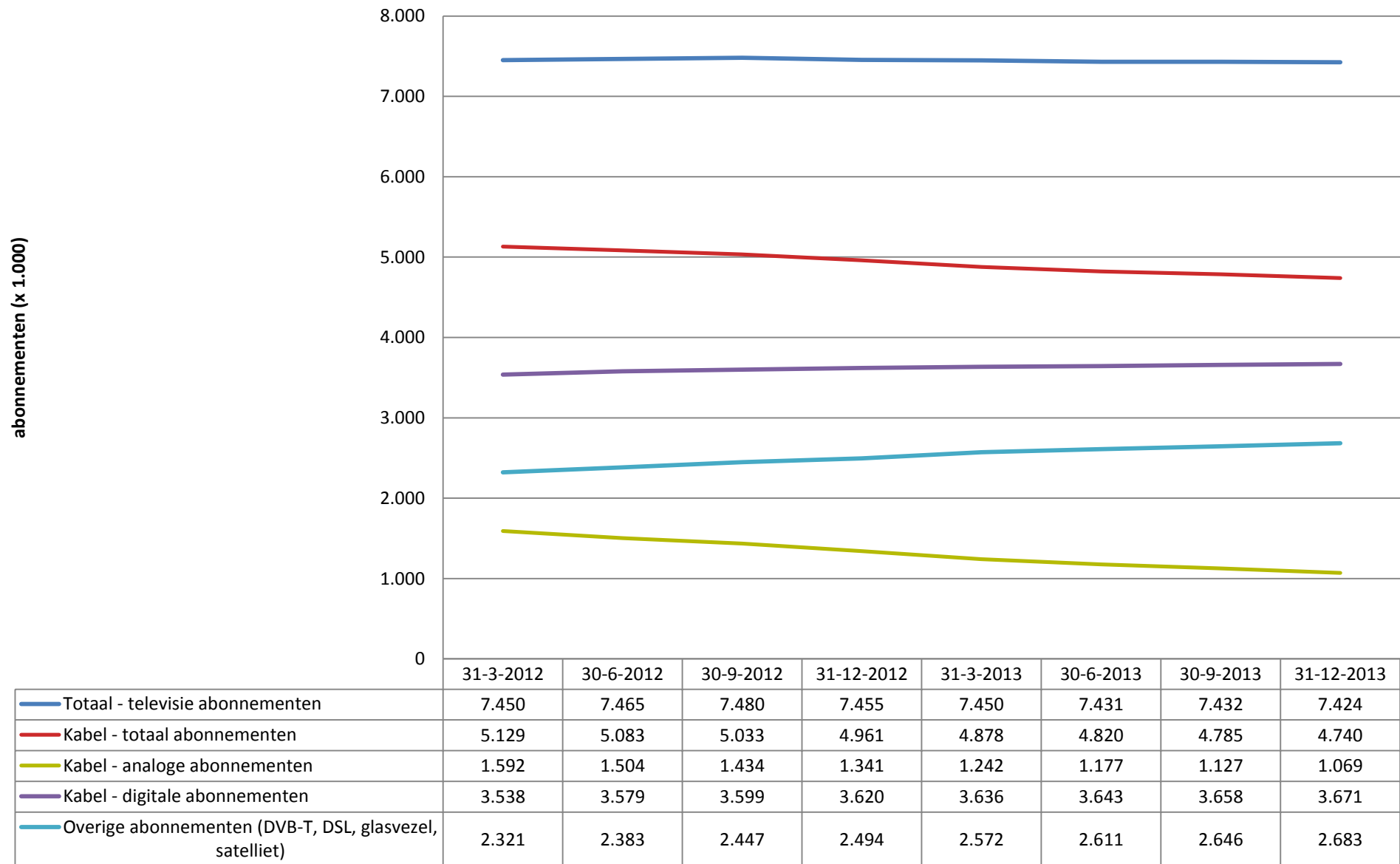


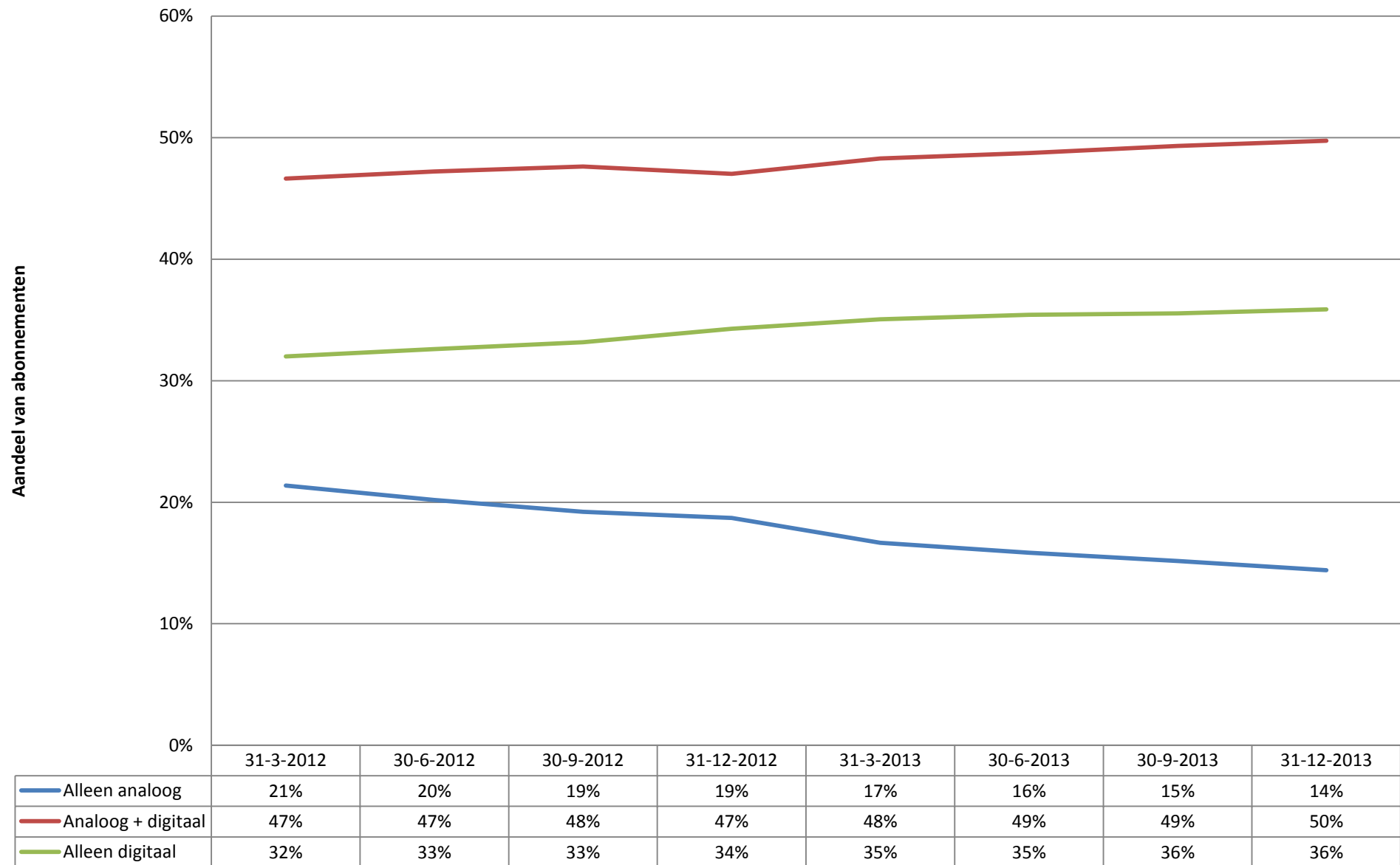


## Televisie: abonnementen (standaardpakketten, landelijk)



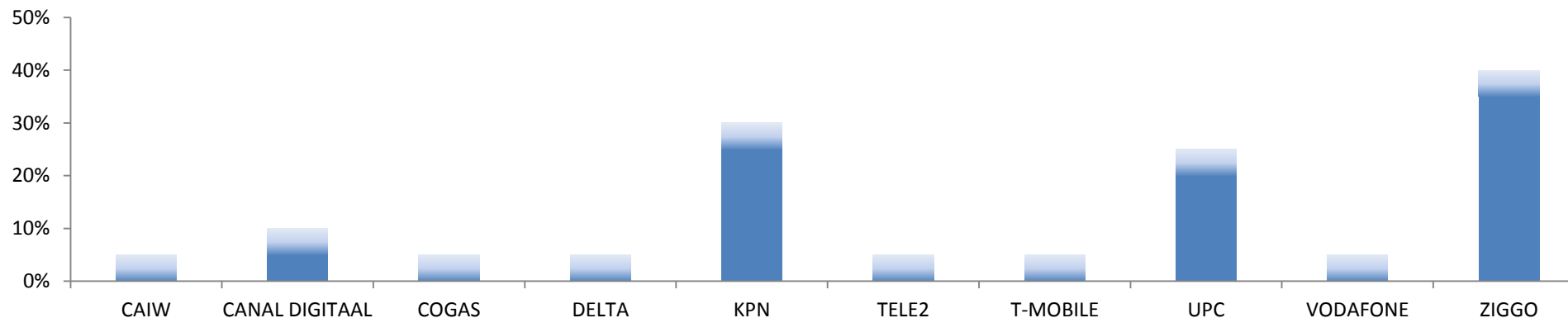


## Televisie: digitalisering van abonnementen





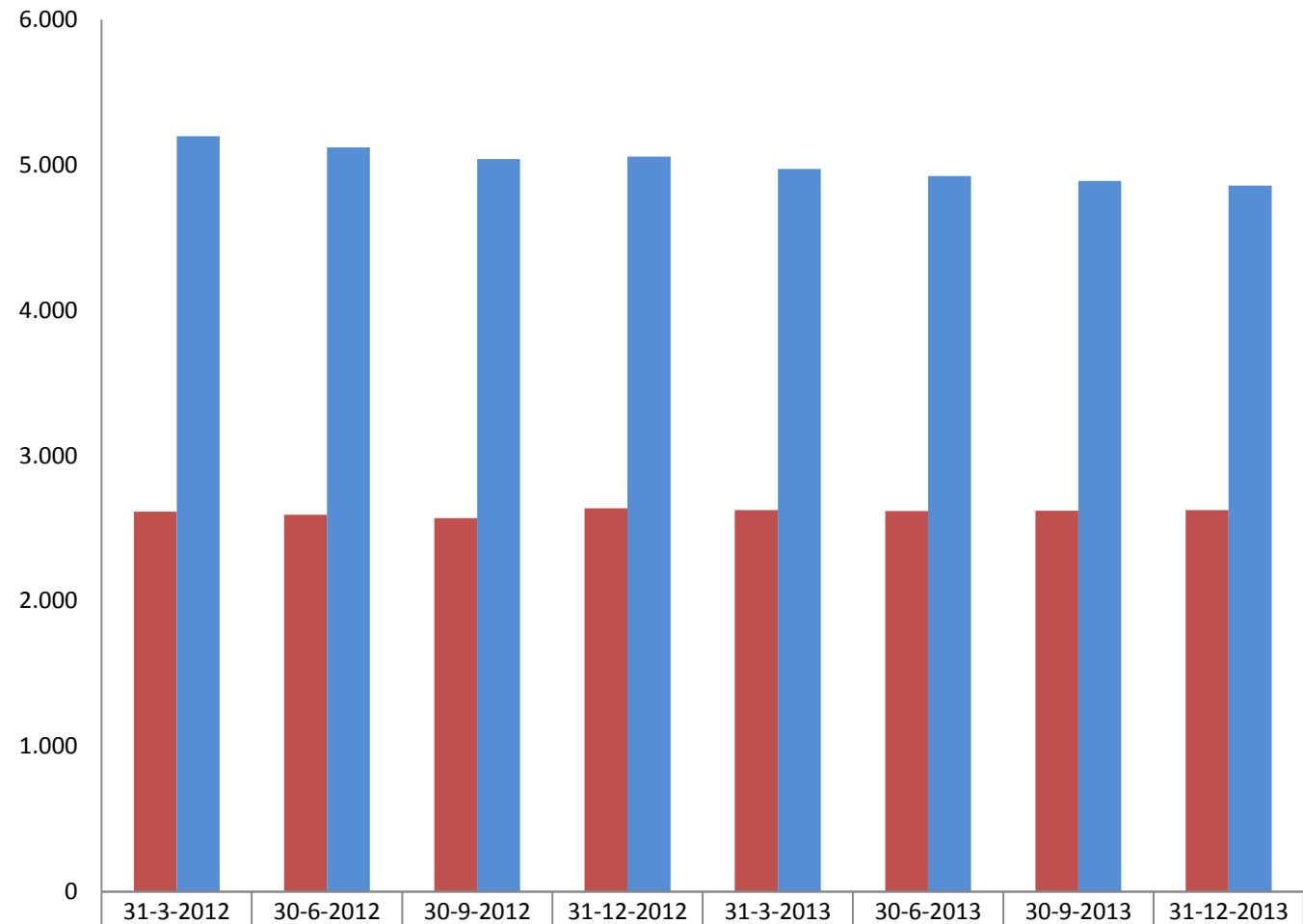
## Televisie: Marktaandelen op basis van abonneementen (landelijk, 2013Q4)



	31-3-2012	30-6-2012	30-9-2012	31-12-2012	31-3-2013	30-6-2013	30-9-2013	31-12-2013
CAIW	[0-5%]	[0-5%]	[0-5%]	[0-5%]	[0-5%]	[0-5%]	[0-5%]	[0-5%]
CANAL DIGITAAL	[5-10%]	[5-10%]	[5-10%]	[5-10%]	[5-10%]	[5-10%]	[5-10%]	[5-10%]
COGAS	[0-5%]	[0-5%]	[0-5%]	[0-5%]	[0-5%]	[0-5%]	[0-5%]	[0-5%]
DELTA	[0-5%]	[0-5%]	[0-5%]	[0-5%]	[0-5%]	[0-5%]	[0-5%]	[0-5%]
KPN	[15-20%]	[20-25%]	[20-25%]	[20-25%]	[20-25%]	[25-30%]	[25-30%]	[25-30%]
Overig/Other	-	[0-5%]	[0-5%]	-	-	-	-	-
REGGEFIBER	[0-5%]	-	-	-	-	-	-	-
TELE2	[0-5%]	[0-5%]	[0-5%]	[0-5%]	[0-5%]	[0-5%]	[0-5%]	[0-5%]
T-MOBILE	[0-5%]	[0-5%]	[0-5%]	[0-5%]	[0-5%]	[0-5%]	[0-5%]	[0-5%]
UPC	[20-25%]	[20-25%]	[20-25%]	[20-25%]	[20-25%]	[20-25%]	[20-25%]	[20-25%]
VODAFONE	-	-	[0-5%]	[0-5%]	[0-5%]	[0-5%]	[0-5%]	[0-5%]
ZIGGO	[35-40%]	[35-40%]	[35-40%]	[35-40%]	[35-40%]	[35-40%]	[35-40%]	[35-40%]



## Televisie: Herfindahl-Hirschman Index op basis van RTV abonnementen (landelijk)

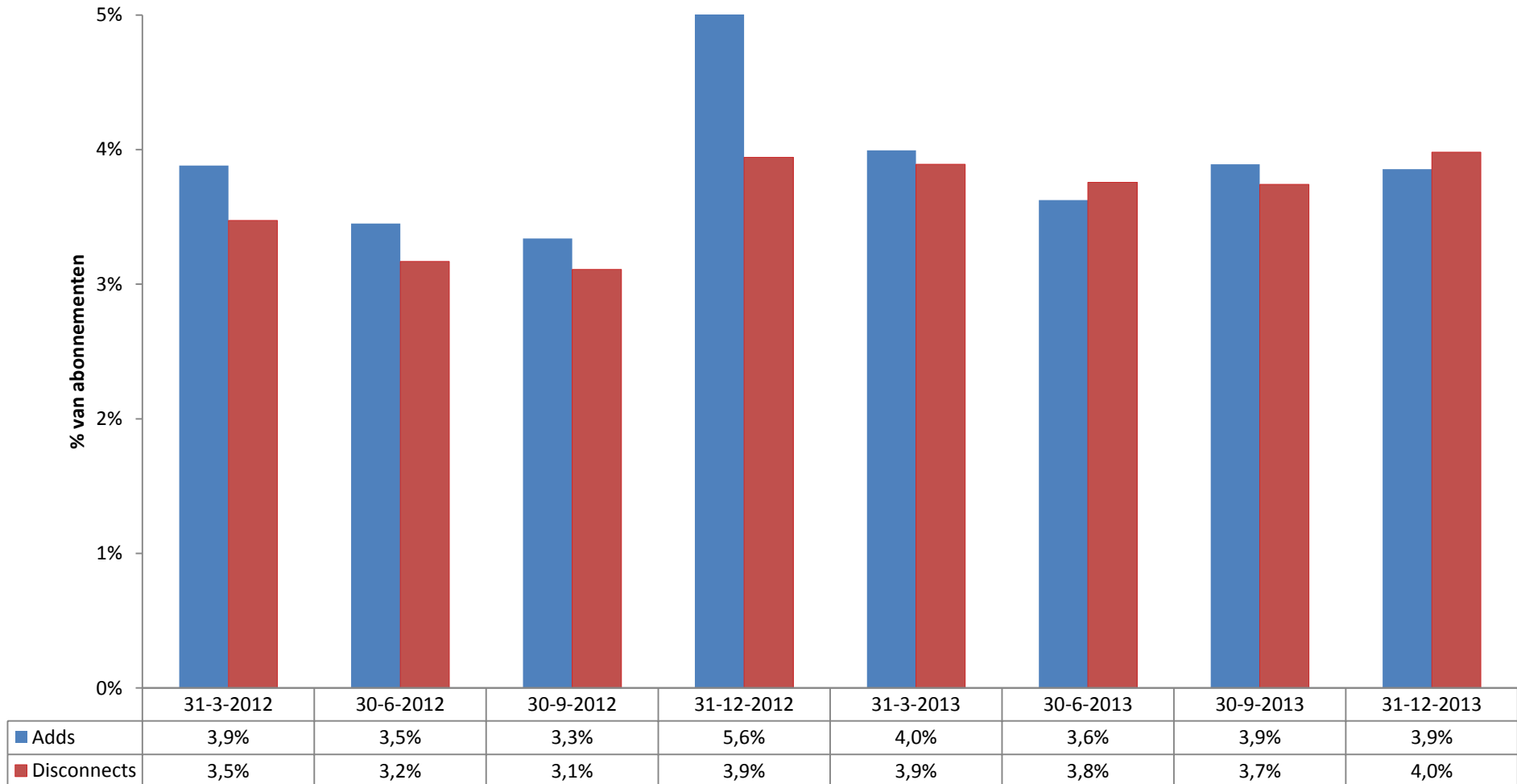


■ HHI concentratie-index abonnementen	2.614	2.593	2.571	2.637	2.624	2.619	2.621	2.624
■ HHI concentratie-index abonnementen, wanneer regionale kabelaanbieders gezamenlijk als 1 aanbieder tellen	5.197	5.120	5.041	5.058	4.973	4.924	4.890	4.858

Op basis van gegevens van CAIW, CANALDIGITAAL, COGAS, DELTA, KPN, REGGEFIBER, TELE2, T-MOBILE, UPC, UPC BUSINESS, VODAFONE en ZIGGO.  
Op basis van vragen 5\_A\_1\_\*\_\*\* van de SMM.

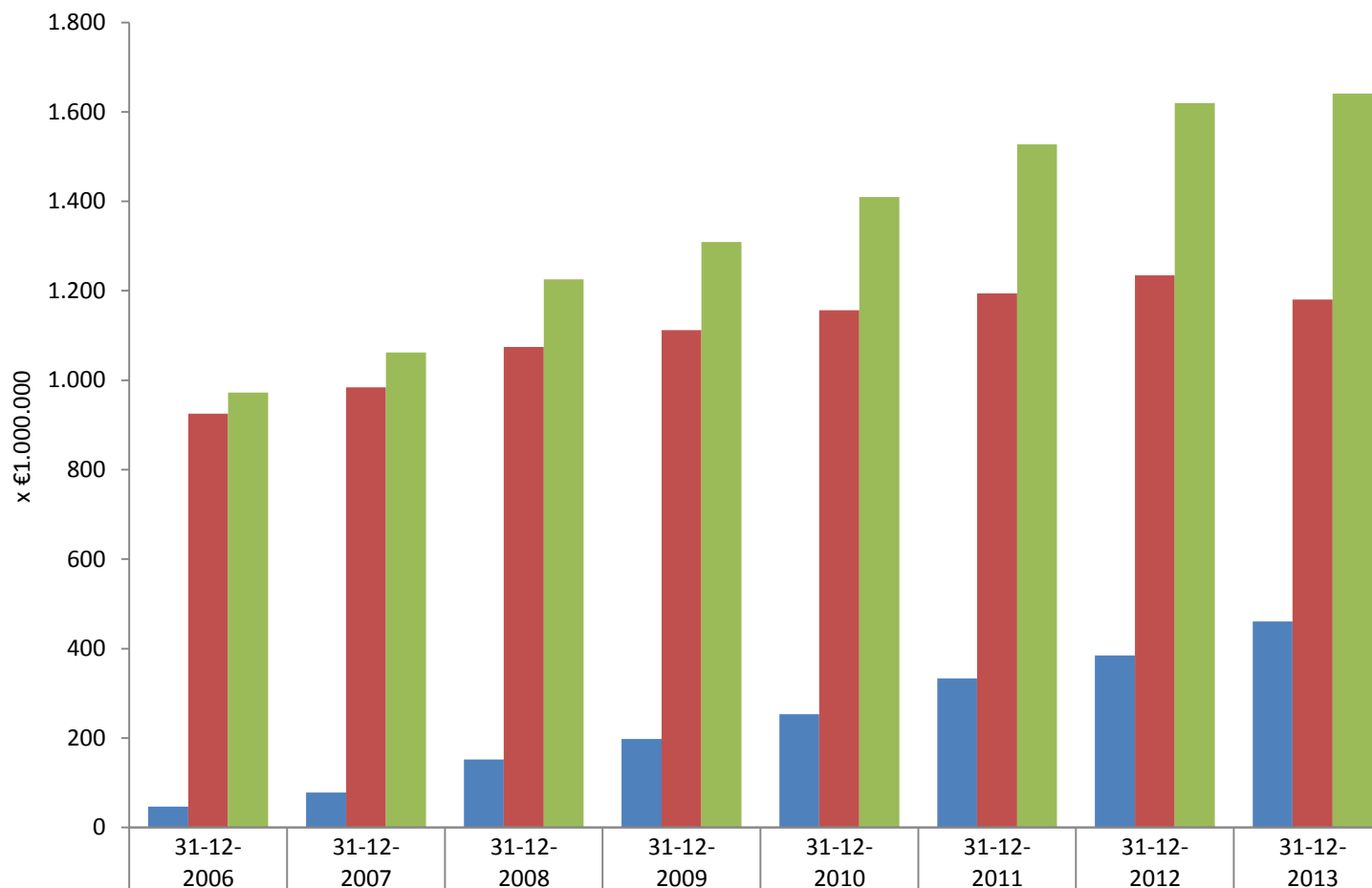


## Televisie: Churn op basis van radio&TV abonnementen (standaardpakketten, landelijk)





## Televisie: Retail jaaromzet RTV abonnementen



■ Retailjaaromzet RTV van niet-kabel partijen geaggregeerd	47	78	152	198	254	333	385	461
■ Retailjaaromzet RTV van kabelpartijen geaggregeerd	925	984	1.074	1.112	1.156	1.194	1.235	1.180
■ Totale retailjaaromzet RTV abonnementen	972	1.062	1.226	1.309	1.410	1.527	1.619	1.641



## Televisie: Gebruik van kabelnetwerken (landelijk)

