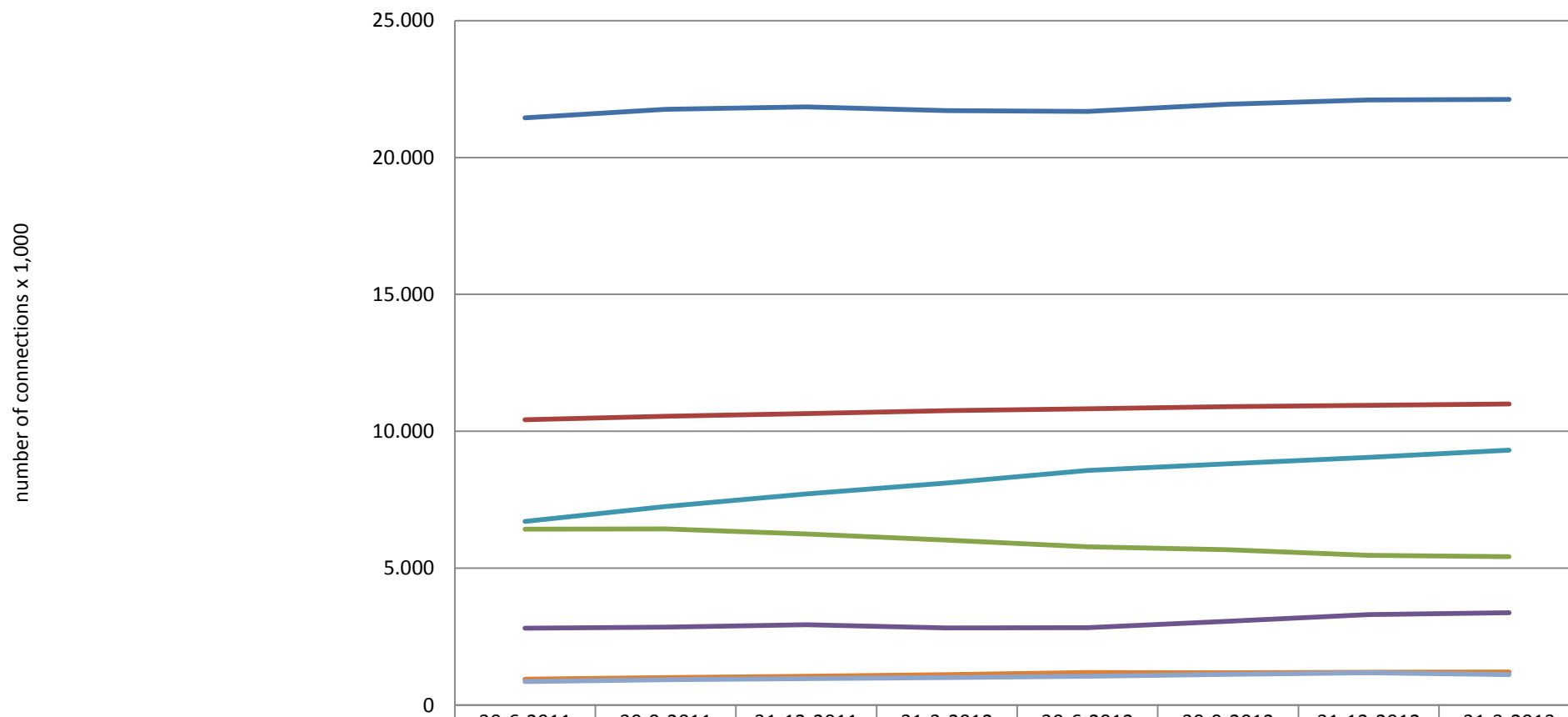




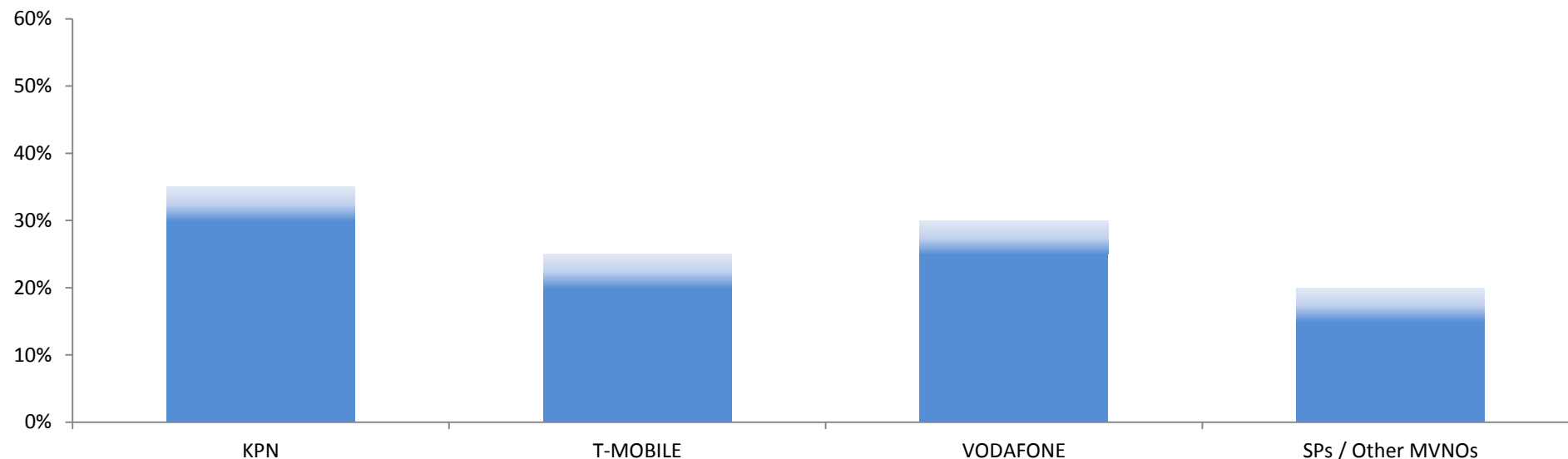
Mobile: Number of retail mobile connections



	30-6-2011	30-9-2011	31-12-2011	31-3-2012	30-6-2012	30-9-2012	31-12-2012	31-3-2013
Total	21.453	21.763	21.848	21.714	21.679	21.945	22.097	22.118
Postpaid MNO	10.421	10.550	10.644	10.757	10.824	10.904	10.948	11.001
Prepaid MNO	6.423	6.435	6.252	6.027	5.784	5.678	5.466	5.420
Connections MVNO	2.805	2.850	2.933	2.819	2.829	3.062	3.304	3.375
Connections with mobile broadband	6.711	7.250	7.713	8.109	8.574	8.811	9.051	9.307
Dedicated mobile broadband connections	943	1.004	1.053	1.110	1.186	1.184	1.197	1.209
M2M	861	924	965	1.001	1.057	1.118	1.183	1.113



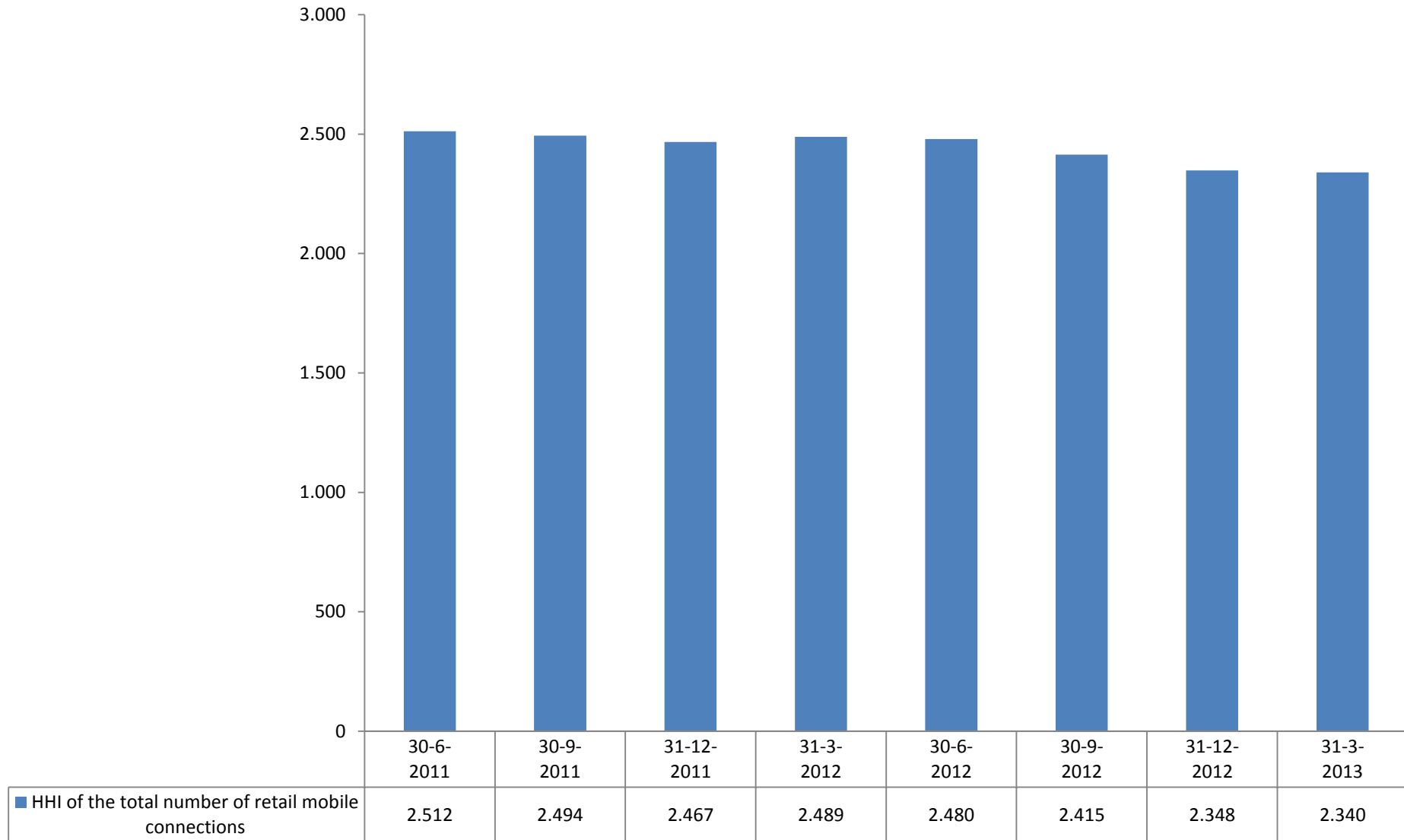
Mobile: Retail market shares based on connections (2013Q1)



	30-6-2011	30-9-2011	31-12-2011	31-3-2012	30-6-2012	30-9-2012	31-12-2012	31-3-2013
KPN	[30-35%]	[30-35%]	[30-35%]	[30-35%]	[30-35%]	[30-35%]	[30-35%]	[30-35%]
T-MOBILE	[20-25%]	[20-25%]	[20-25%]	[20-25%]	[20-25%]	[20-25%]	[20-25%]	[20-25%]
Vodafone	[25-30%]	[25-30%]	[25-30%]	[25-30%]	[25-30%]	[25-30%]	[25-30%]	[25-30%]
SPs / Other MVNOs	[10-15%]	[10-15%]	[10-15%]	[10-15%]	[10-15%]	[15-20%]	[15-20%]	[15-20%]

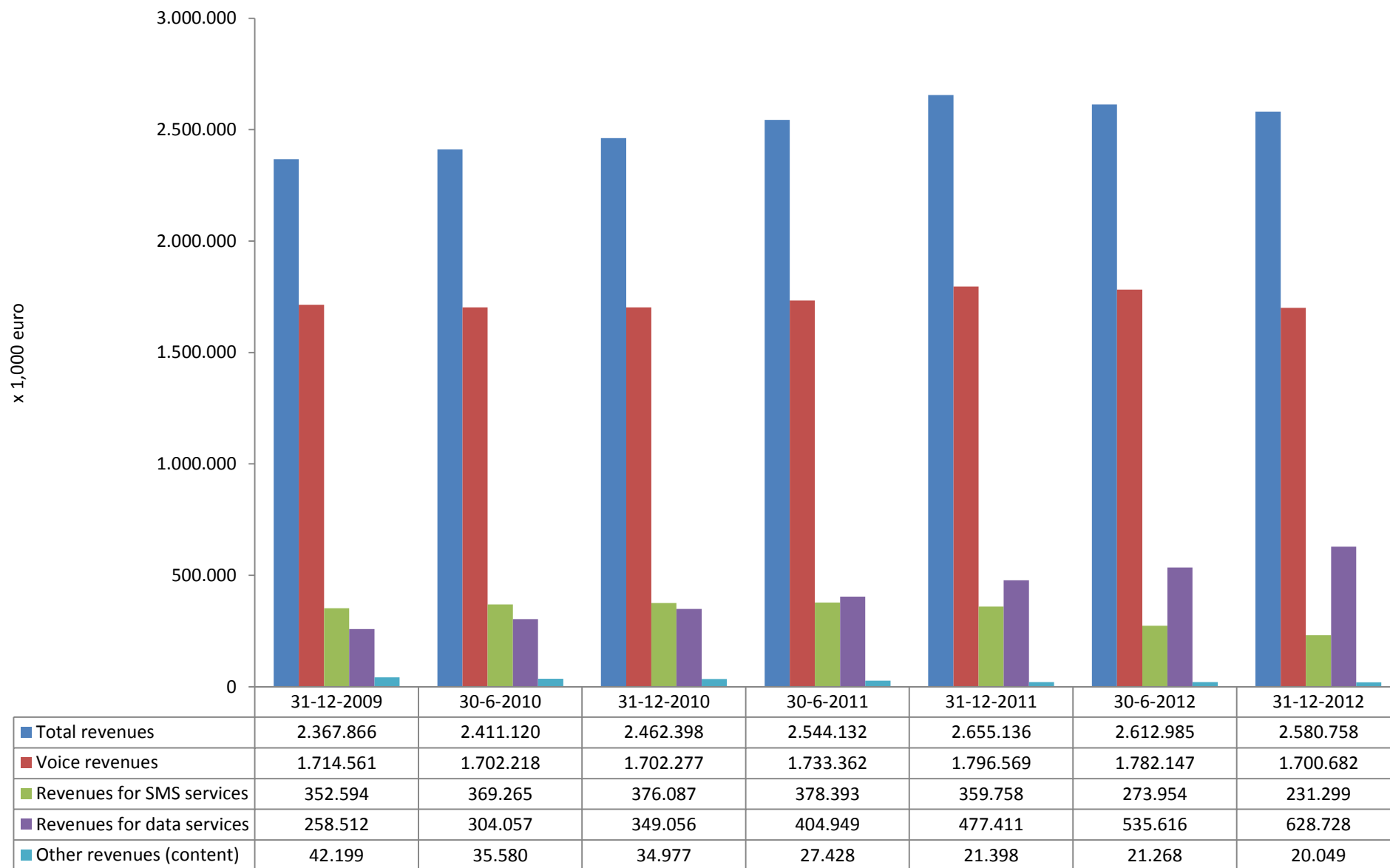


Mobile: Herfindahl-Hirschman Index of retail mobile connections



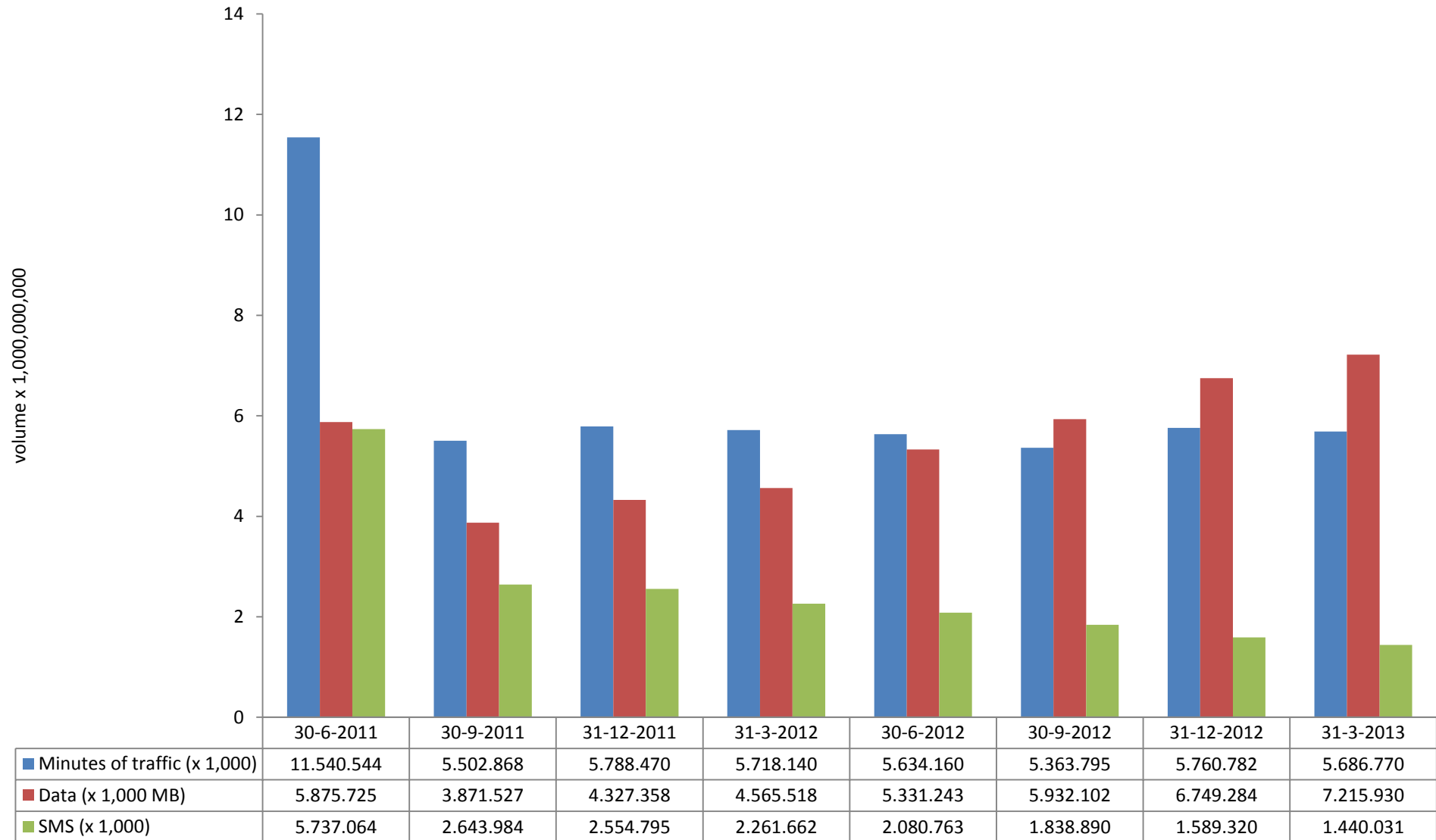


Mobile: Retail revenues per half year





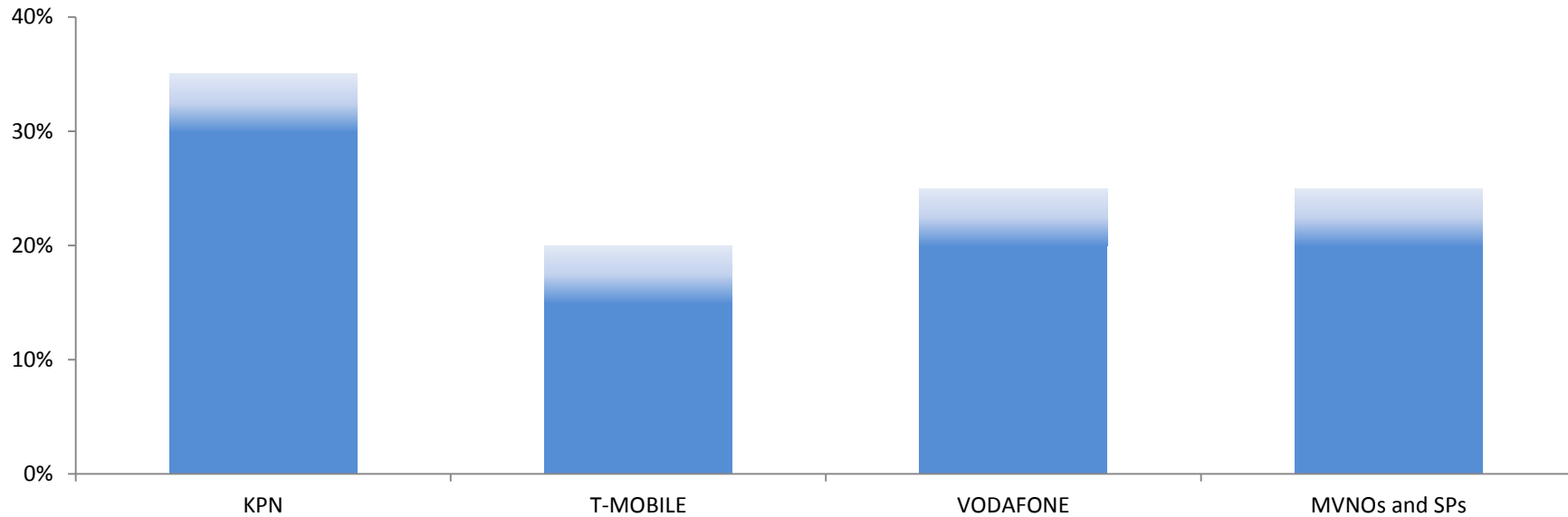
Mobile: Volume retail minutes of traffic, data and sms (MNOs and MVNOs) Until midst of 2011 per 6 months, afterwards per 3 months



Based on figures from KPN, T-MOBILE and VODAFONE. Based on questions 1_A_3_2-3-4, 1_B_5_4-5-6, 1_B_6_4-5-6, 1_C_9_1-2-3, 1_D_3_1-2-3 and 1_D_4_1-2-3 of the SMM.



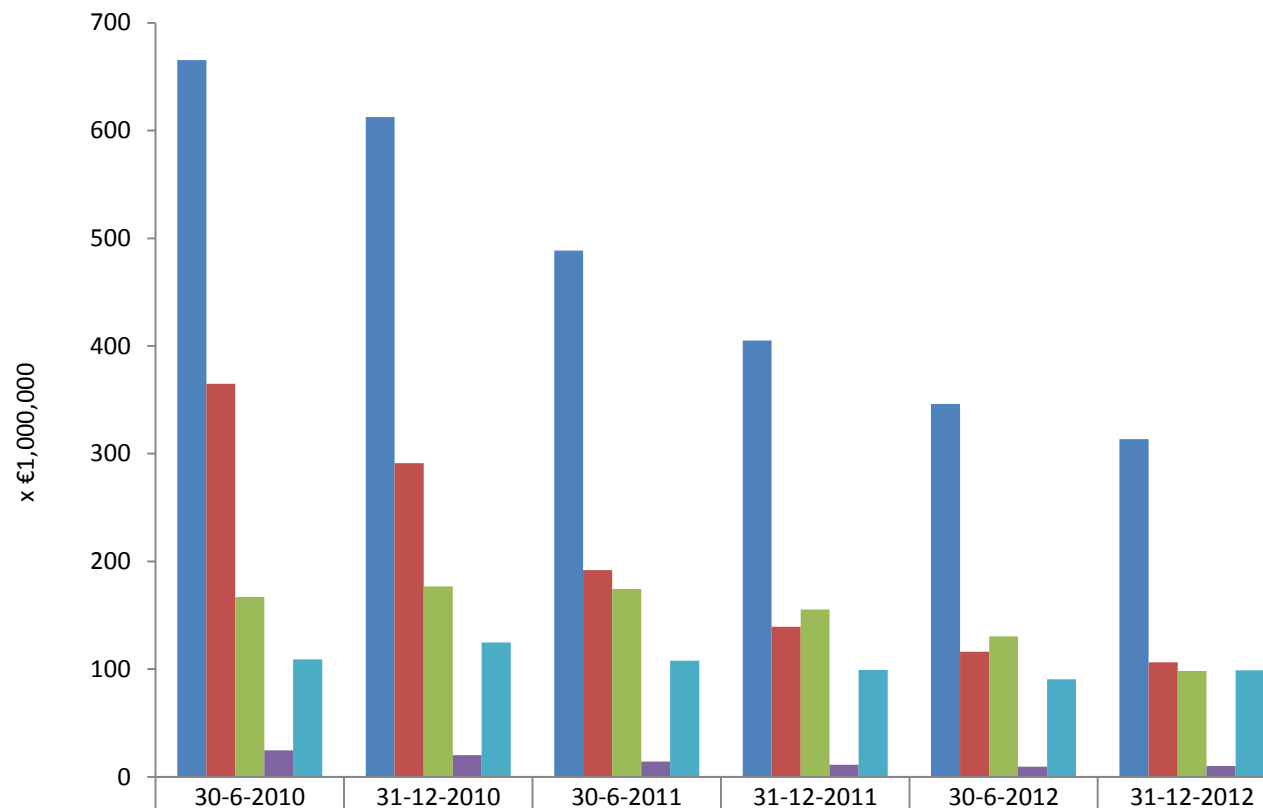
Mobile: Market shares based on total retail traffic volumes (2013Q1)



	30-6-2011	30-9-2011	31-12-2011	31-3-2012	30-6-2012	30-9-2012	31-12-2012	31-3-2013
KPN	[30-35%]	[30-35%]	[30-35%]	[30-35%]	[30-35%]	[30-35%]	[30-35%]	[30-35%]
T-MOBILE	[20-25%]	[20-25%]	[20-25%]	[20-25%]	[20-25%]	[20-25%]	[15-20%]	[15-20%]
VODAFONE	[20-25%]	[20-25%]	[20-25%]	[20-25%]	[20-25%]	[20-25%]	[20-25%]	[20-25%]
MVNOs and SPs	[15-20%]	[15-20%]	[15-20%]	[15-20%]	[20-25%]	[20-25%]	[20-25%]	[20-25%]



Mobile: Wholesale revenues terminating access

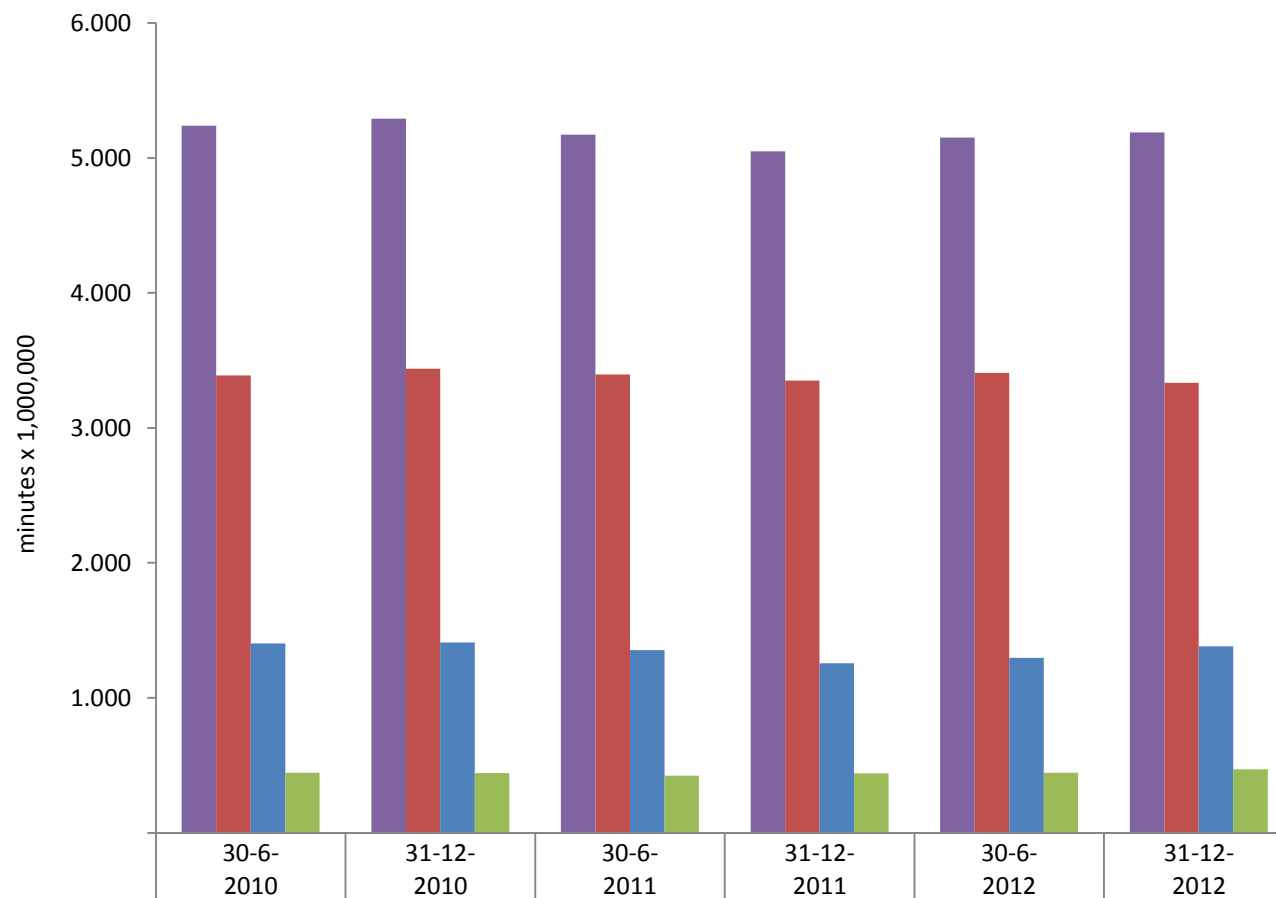


	30-6-2010	31-12-2010	30-6-2011	31-12-2011	30-6-2012	31-12-2012
Total wholesale revenues terminating access	666	613	489	405	346	313
Terminating revenues for national voice services	365	291	192	139	116	106
Terminating revenues for national non-voice services	167	177	175	155	130	98
Terminating revenues for international services	25	20	14	11	9	10
Revenues of services to SP's / MVNO's	109	125	108	99	91	99

Based on figures from KPN, T-MOBILE and VODAFONE. Based on questions 1_C_6_1 through 1_C_6_3 of the SMM.



Mobile: Wholesale terminating access volume minutes (excl. on-net)



■ Total volume of traffic terminated	5.238	5.291	5.173	5.049	5.151	5.188
■ Volume terminated from national mobile networks	3.389	3.439	3.397	3.350	3.408	3.335
■ Volume terminated from national fixed networks	1.404	1.410	1.354	1.257	1.296	1.383
■ Volume terminated from abroad	446	442	423	441	446	471

Based on figures from KPN, T-MOBILE and VODAFONE. Based on questions 1_C_8_1 through 1_C_8_3 of the SMM.