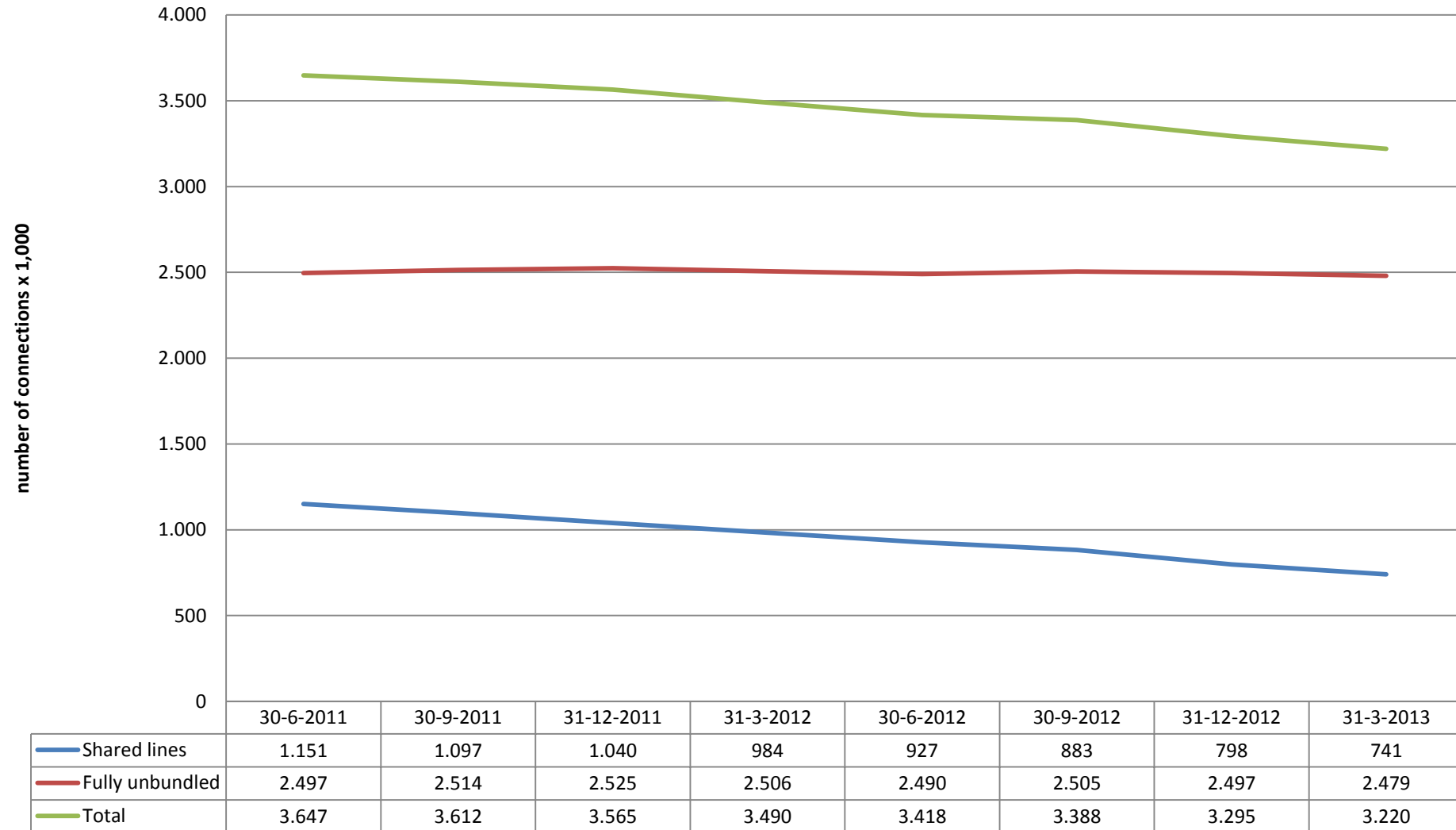




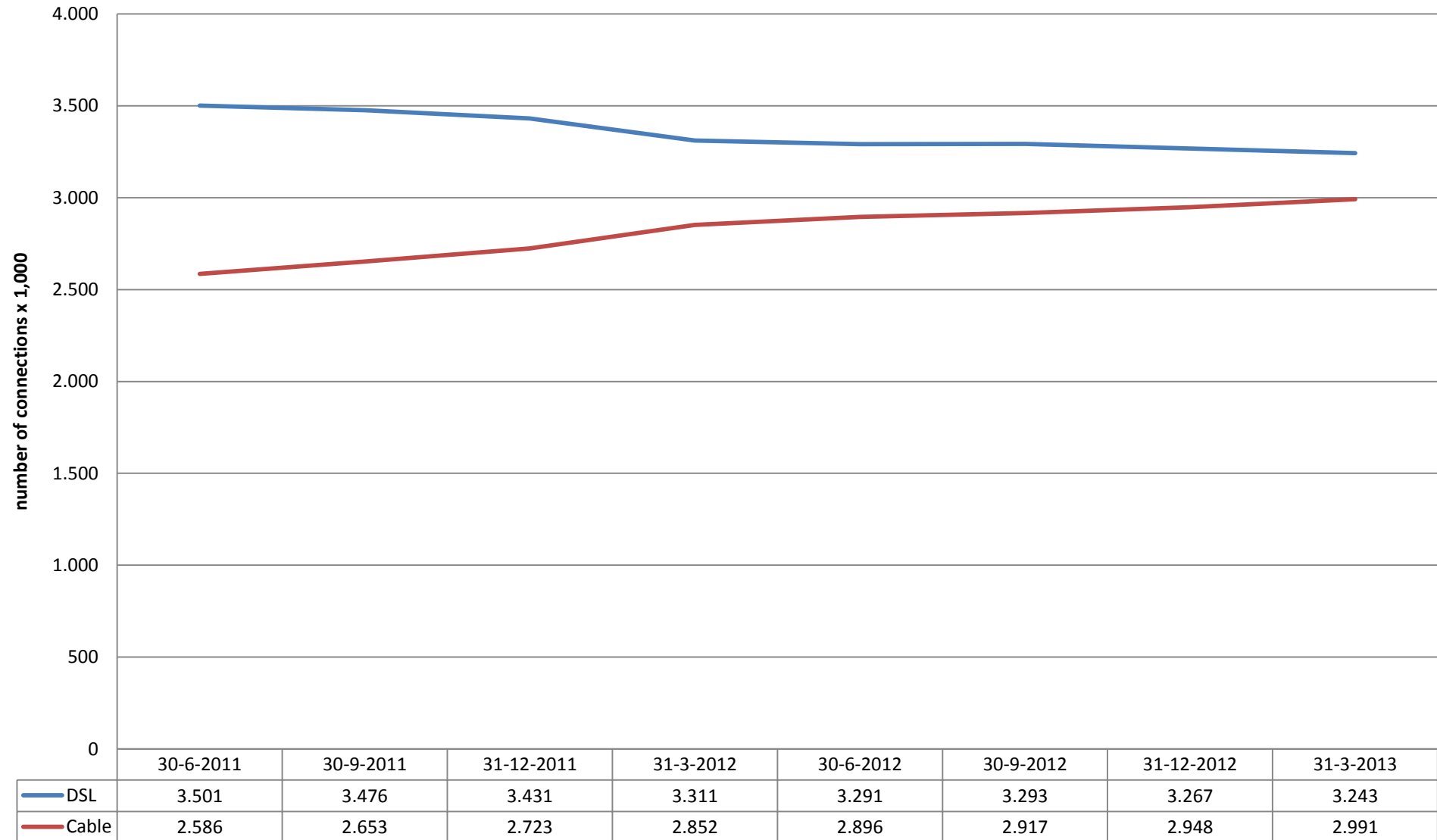
Broadband: unbundled MDF connections per type



Based on figures from KPN. Based on questions 3_A1_1_1, 3_A1_1_2 and 3_A1_1_3 of the SMM.



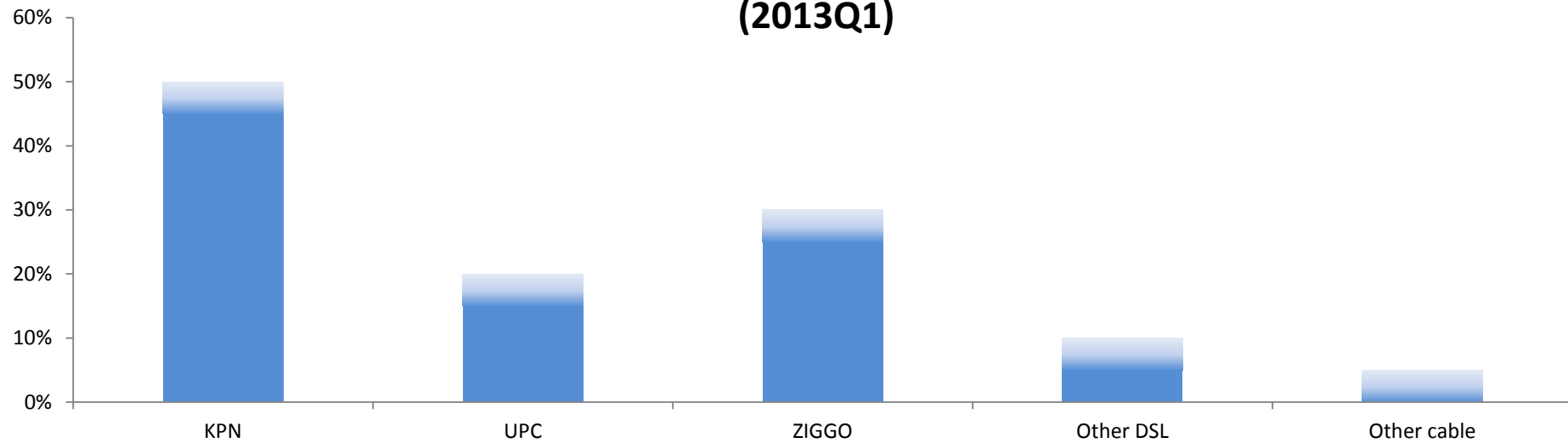
Broadband: WBT low quality connections per type of infrastructure - including self supply



Based on figures from BBNET, CAIW, DELTA, EASYNET, KPN, ONLINE, REGGEFIBER, TELE2, T-MOBILE, UPC, VERIZON, VERSATEL, ZIGGO. Based on questions 3_A3_5_1-2-3-4-5 and 3_A3_6_1-2-3-4 of the SMM.



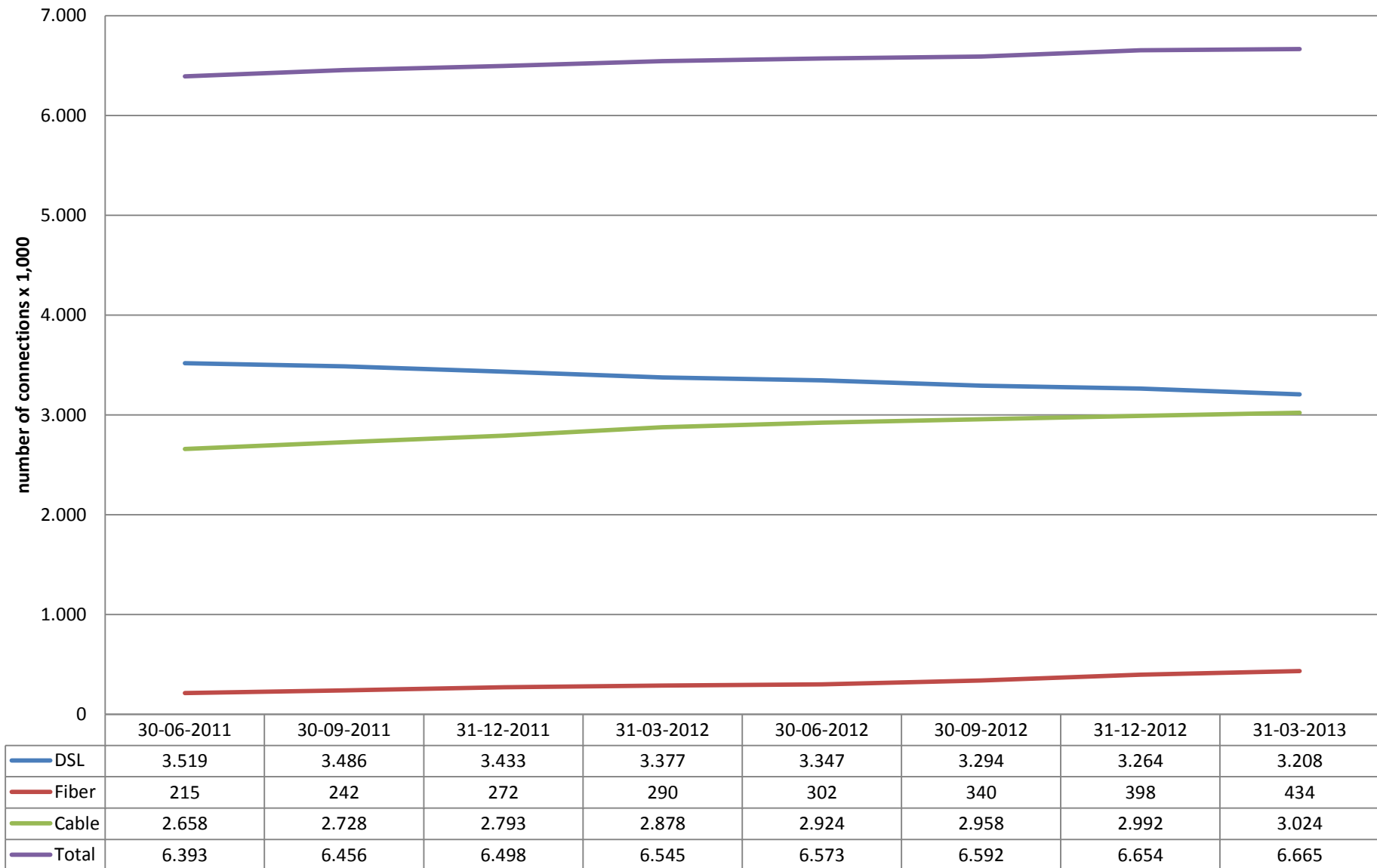
Broadband: marketshare WBT low quality per party - including self supply (2013Q1)



	30-6-2011	30-9-2011	31-12-2011	31-3-2012	30-6-2012	30-9-2012	31-12-2012	31-3-2013
KPN	[45 - 50%]	[45 - 50%]	[45 - 50%]	[40 - 45%]	[45 - 50%]	[45 - 50%]	[45 - 50%]	[45 - 50%]
REGGEFIBER	[0 - 5%]	[0 - 5%]	[0 - 5%]	[0 - 5%]	-	-	-	-
UPC	[10 - 15%]	[10 - 15%]	[10 - 15%]	[15 - 20%]	[15 - 20%]	[15 - 20%]	[15 - 20%]	[15 - 20%]
ZIGGO	[20 - 25%]	[25 - 30%]	[25 - 30%]	[25 - 30%]	[25 - 30%]	[25 - 30%]	[25 - 30%]	[25 - 30%]
Other DSL	[10 - 15%]	[5 - 10%]	[5 - 10%]	[5 - 10%]	[5 - 10%]	[5 - 10%]	[5 - 10%]	[5 - 10%]
Other cable	[0 - 5%]	[0 - 5%]	[0 - 5%]	[0 - 5%]	[0 - 5%]	[0 - 5%]	[0 - 5%]	[0 - 5%]



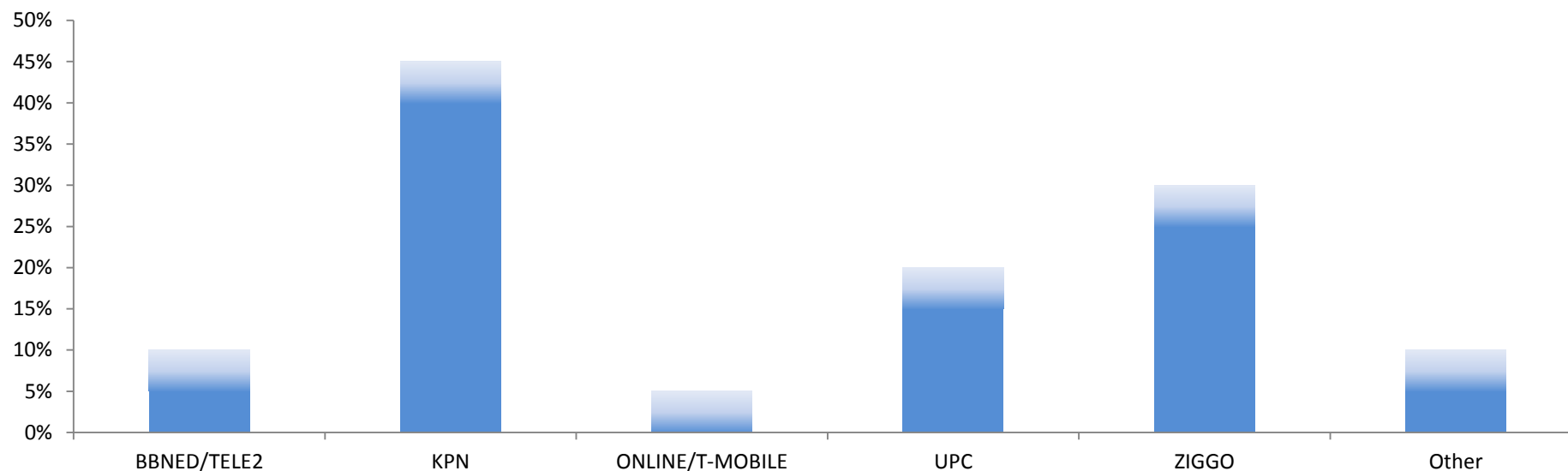
Broadband: retail connections per type



Based on figures from BBED, CAIW, DELTA, EASYNET, KPN, ONLINE, REGGEFIBER, SCARLET, TELE2, T-MOBILE, UPC, UPC BUSINESS, VERIZON, VERSATEL, VODAFONE and ZIGGO. Based on questions 3_A1_3_1-3, 3_A3_5_1-2-3-4 and 3_B_8_1-2-3-5 of the SMM.



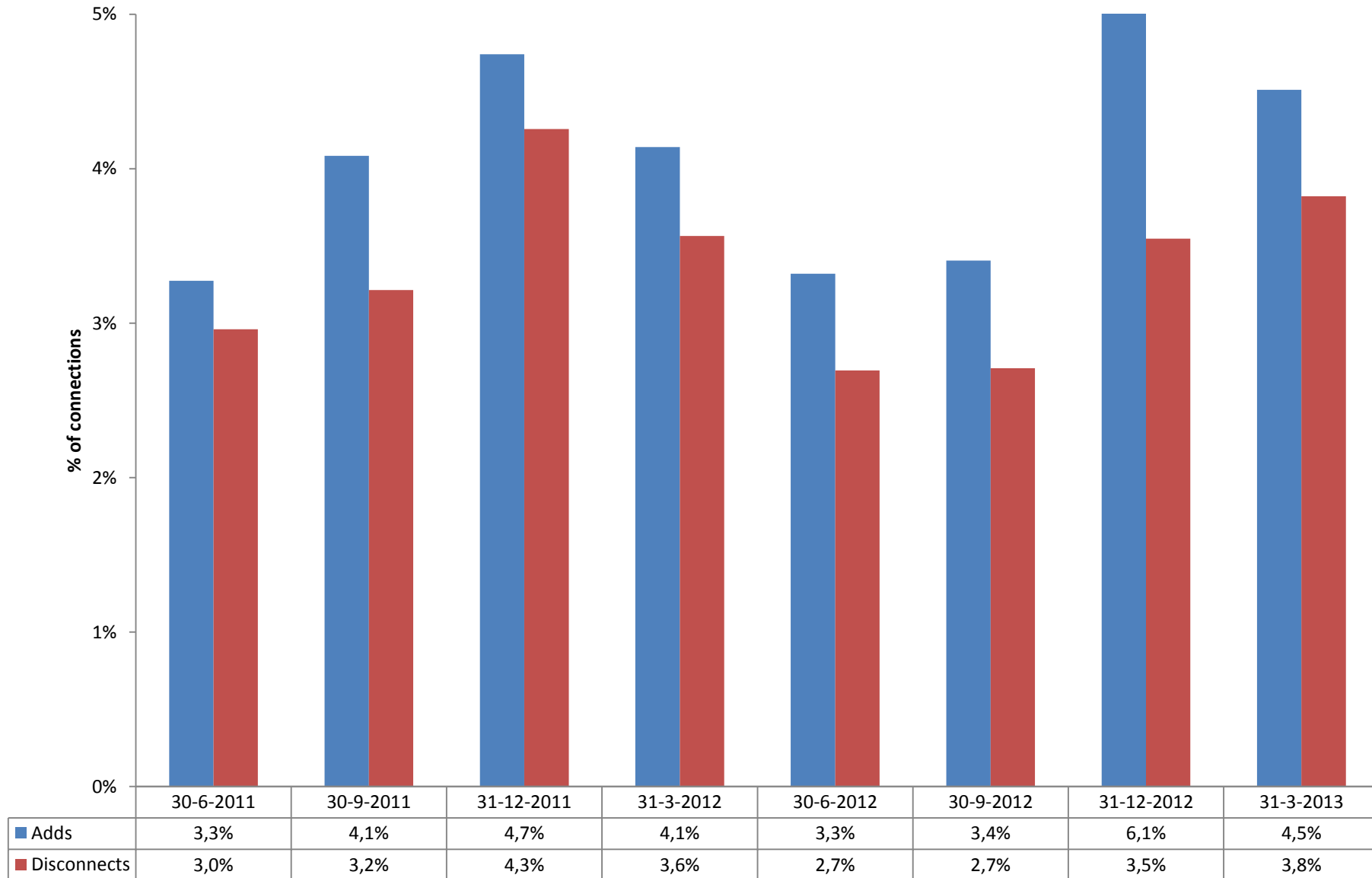
Broadband: marketshare retail per party (2013Q1)



	30-6-2011	30-9-2011	31-12-2011	31-3-2012	30-6-2012	30-9-2012	31-12-2012	31-3-2013
BBNED/TELE2	[5 - 10%]	[5 - 10%]	[5 - 10%]	[5 - 10%]	[5 - 10%]	[5 - 10%]	[5 - 10%]	[5 - 10%]
KPN	[40 - 45%]	[40 - 45%]	[40 - 45%]	[40 - 45%]	[40 - 45%]	[40 - 45%]	[40 - 45%]	[40 - 45%]
ONLINE/T-MOBILE	[0 - 5%]	[0 - 5%]	[0 - 5%]	[0 - 5%]	[0 - 5%]	[0 - 5%]	[0 - 5%]	[0 - 5%]
REGGEFIBER	[0 - 5%]	[0 - 5%]	[0 - 5%]	[0 - 5%]	-	-	-	-
UPC	[10 - 15%]	[10 - 15%]	[10 - 15%]	[15 - 20%]	[15 - 20%]	[15 - 20%]	[15 - 20%]	[15 - 20%]
ZIGGO	[25 - 30%]	[25 - 30%]	[25 - 30%]	[25 - 30%]	[25 - 30%]	[25 - 30%]	[25 - 30%]	[25 - 30%]
Other	[5 - 10%]	[5 - 10%]	[5 - 10%]	[5 - 10%]	[5 - 10%]	[5 - 10%]	[5 - 10%]	[5 - 10%]



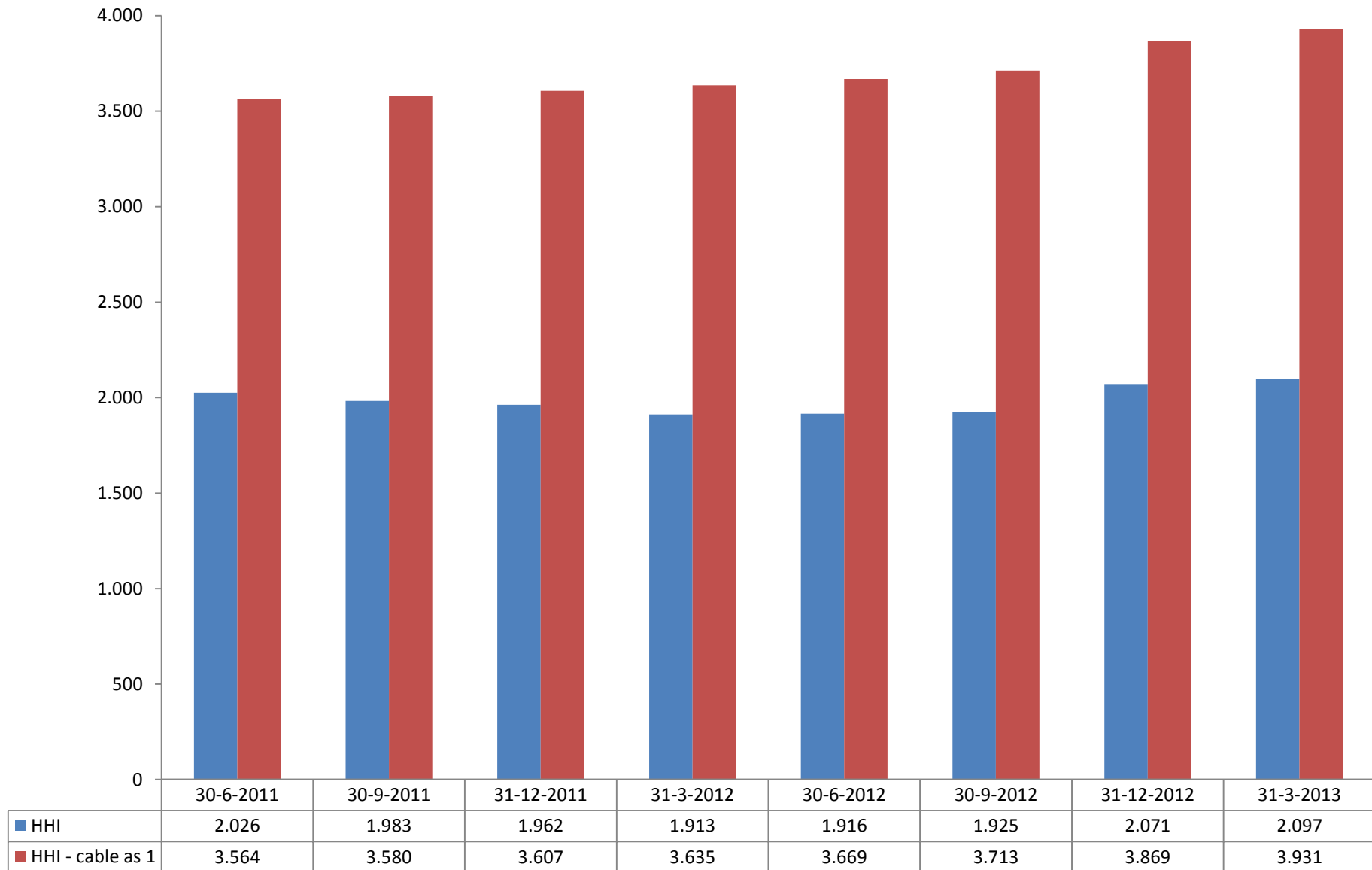
Broadband: Churn based on retail connections



Based on figures from BBNET, CAIW, DELTA, EASYNET, KPN, ONLINE, REGGEFIBER, SCARLET, TELE2, T-MOBILE, UPC, UPC BUSINESS, VERIZON, VODAFONE and ZIGGO. Based on questions 3_E_13_1 and 3_E_13_2 of the SMM.



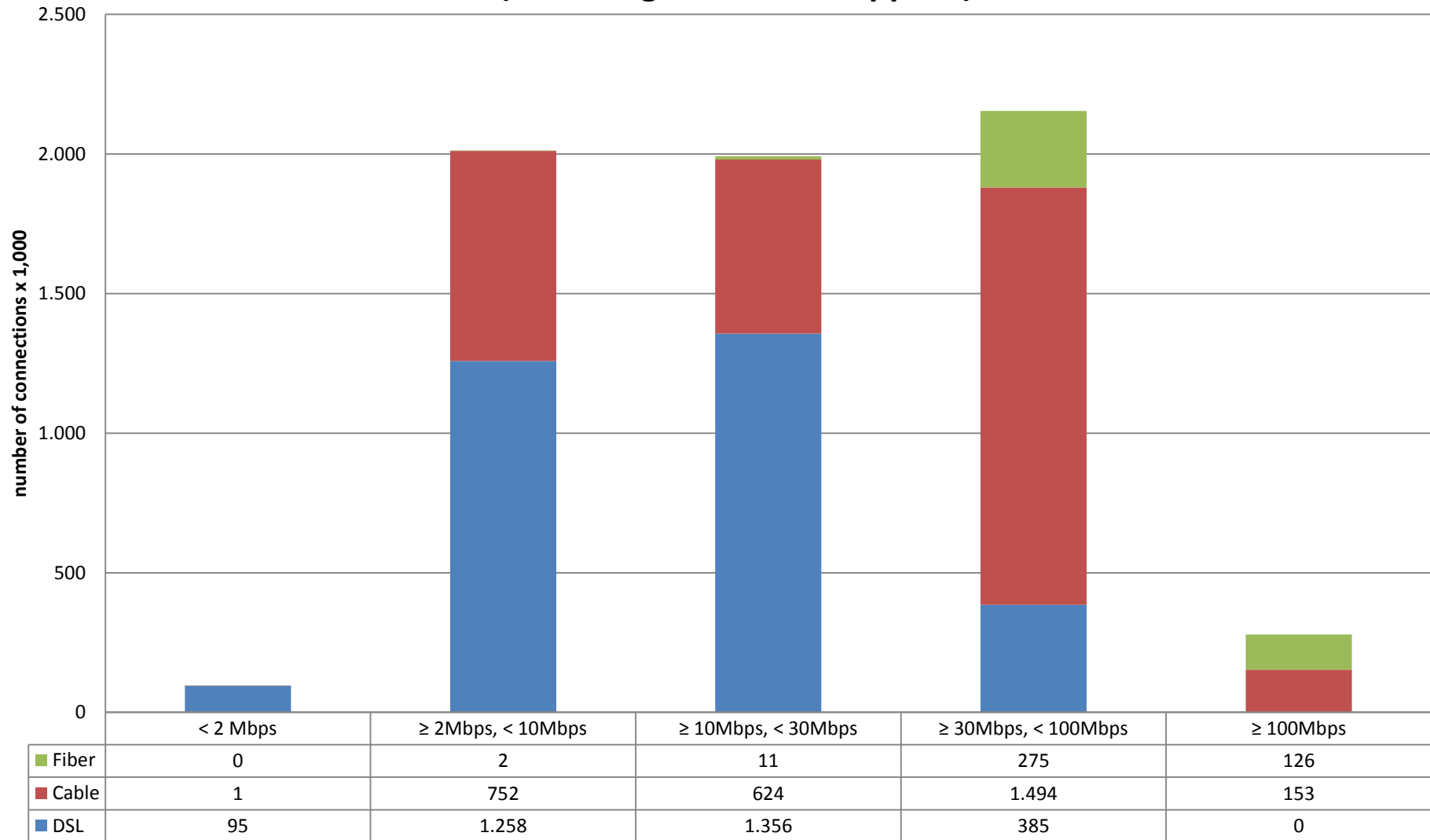
Broadband: HHI based on retailconnections broadband



Based on figures from BBNET, CAIW, DELTA, EASYNET, KPN, ONLINE, REGGEFIBER, TELE2, T-MOBILE, UPC, VERIZON, VODAFONE and ZIGGO. Based on questions 3_A1_3_1-3, 3_A3_5_1-2-3-4 and 3_B_8_1-2-3-5 from the SMM.



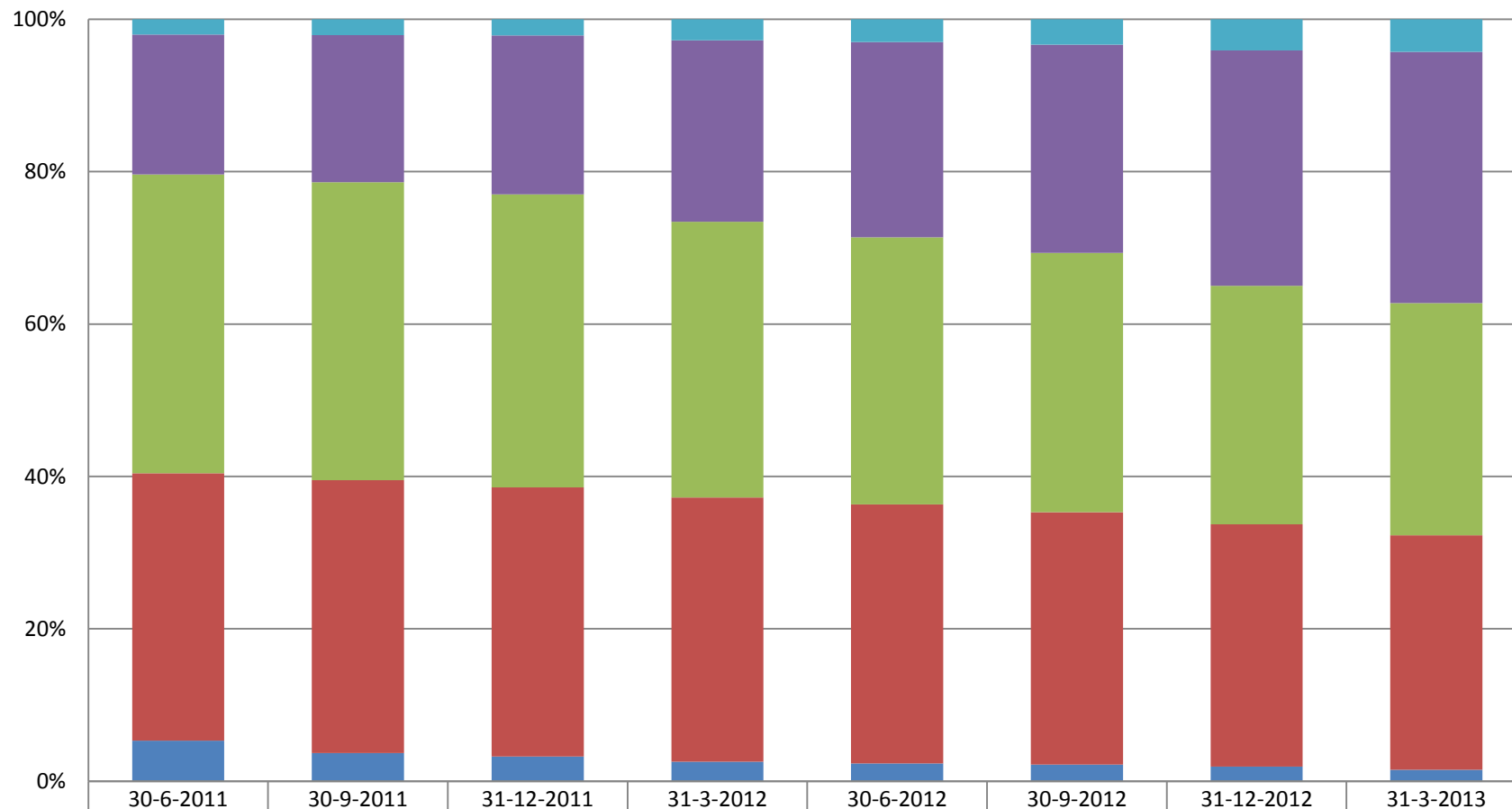
Broadband: retail connections by speed and infrastructure (2013Q1) (Excluding wholesale supplies)



Based on figures from BBNET, CAIW, DELTA, EASYNET, KPN, REGGEFIBER, TELE2, T-MOBILE, UPC, UPC BUSINESS, VODAFONE and ZIGGO. Based on questions 3_B1_8_1-5, 3_B2_8_1-5 and 3_B3_8_1-5 of the SMM.



Broadband: retail connections by speed (Excluding wholesale supplies)

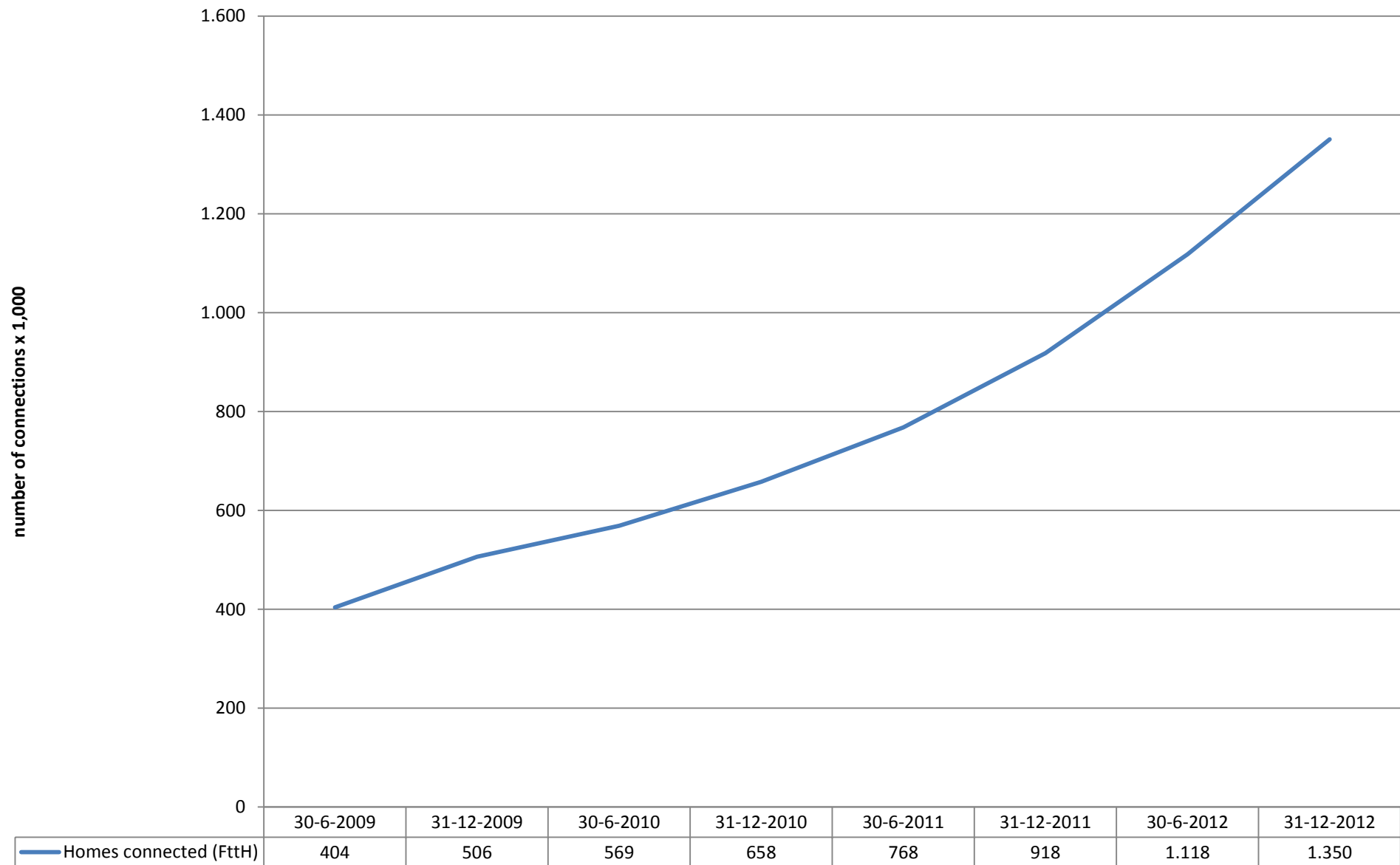


	30-6-2011	30-9-2011	31-12-2011	31-3-2012	30-6-2012	30-9-2012	31-12-2012	31-3-2013
≥ 100Mbps	2%	2%	2%	3%	3%	3%	4%	4%
≥ 30Mbps, < 100Mbps	18%	19%	21%	24%	26%	27%	31%	33%
≥ 10Mbps, < 30Mbps	39%	39%	38%	36%	35%	34%	31%	30%
≥ 2Mbps, < 10Mbps	35%	36%	35%	35%	34%	33%	32%	31%
< 2 Mbps	5%	4%	3%	3%	2%	2%	2%	1%

Based on figures from BBNET, CAIW, DELTA, EASYNET, KPN, REGGEFIBER, TELE2, T-MOBILE, UPC, UPC BUSINESS, VODAFONE and ZIGGO. Based on questions 3_B1_8_1-5, 3_B2_8_1-5 and 3_B3_8_1-5 of the SMM.



Broadband: homes connected (FttH)



Based on figures from BBNET, CAIW, DELTA, EASYNET, KPN, ONLINE, REGGEFIBER, SCARLET, TELE2, UPC, VERIZON, VERSATEL and ZIGGO. Based on question 3_C_9_4 from the SMM.